

22 mm

Description

Ratings

- Worldwide availability
- UL Listed for Types 1, 3R, 4, 4X, 12 & 13 applications
- UL, CSA, NEMA, IEC and most international standards
- CE marking
- UL File # E57057
- CSA File # LR19700

General construction

- Quick mounting feature reduces installation time
- Front ring options are chrome metal, chrome plastic and black plastic
- Contact block holder features rear mounting with quick-release locking mechanism for high security
- Knurled sleeve tightens against panel assuring secure mounting
- Buttons available in seven colors
- Engraved caps available
- Mounts in 7/8"/22mm hole
- Anti-rotation
- Full line of accessories

Operators

- Emergency stop operators in illuminated and non-illuminated, maintained, push-pull or twist release
- Mushroom operators in maintained, push-pull, illuminated, twist release, momentary or key operated designs
- Illuminated & non-illuminated push-push operators with push-on & push-off designs (maintained)
- Two-position toggle operators, maintained
- Three-position toggle operators, maintained or momentary
- Key operated pushbuttons
- Selector switches, 2 or 3 position, illuminated, maintained, momentary or key operated
- Available with or without contact blocks
- Two button momentary operators with pilot light

Pilot lights

- Compact full voltage pilot light
- Full voltage, resistor and transformer type
- LED & neon bulbs available for illuminated pushbuttons and pilot lights

Contact blocks

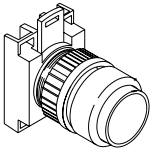
- CBK 22mm and CBG 30mm devices use the same contact blocks, lamp modules, & transformers
- Quick-mount, quick-release contact block holder for fast, easy assembly
- N.O. & N.C. contact blocks are color coded for easy identification: Green, N.O./Red, N.C.
- Silver tipped contacts have wiping action for high reliability
- Low energy gold plated contact blocks available
- Base mounted contact blocks are available and snap onto a 35mm DIN rail or into a Type CBK enclosure
- 5 Contact block holder

Enclosures

- Available for 1, 2, 3, 4 & 6 operators
- Base mounted contacts allow the enclosure cover to be removed; wiring stays with enclosure base
- New base design allows up to 5 contact blocks to be mounted per operator in some combinations

Additional products

- 4X buzzer, continuous and pulsating
- 5k and 10k potentiometers



Flush & extended pushbuttons

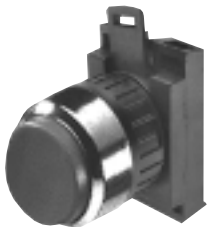
Non-illuminated

Momentary

22 mm



CBK-MPR



CBK-MPER



CBK-CB10



5 contact block holder

Non-illuminated, momentary

Type	Black plastic ring	Chrome plastic ring		Chrome metal ring	
	Catalog number	Catalog number	List price	Catalog number	List price
Flush button					
Red	CBK-KPR	CBK-CPR	\$ 8.10	CBK-MPR	\$ 10.60
Green	CBK-KPG	CBK-CPG		CBK-MPG	
Yellow	CBK-KPY	CBK-CPY		CBK-MPY	
Blue	CBK-KPL	CBK-CPL		CBK-MPL	
Black	CBK-KPB	CBK-CPB		CBK-MPB	
Clear ^①	CBK-KPC	CBK-CPC		CBK-MPC	
White	CBK-KPW	CBK-CPW		CBK-MPW	
Extended button					
Red	CBK-KPER	CBK-CPER	8.10	CBK-MPER	10.60
Green	CBK-KPEG	CBK-CPEG		CBK-MPEG	
Yellow	CBK-KPEY	CBK-CPEY		CBK-MPEY	
Blue	CBK-KPEL	CBK-CPEL		CBK-MPEL	
Black	CBK-KPEB	CBK-CPEB		CBK-MPEB	
Clear ^①	CBK-KPEC	CBK-CPEC		CBK-MPEC	
White	CBK-KPEW	CBK-CPEW		CBK-MPEW	

Contact blocks (Maximum 6 per operator)

Item	Separate contact blocks catalog number	Included with operator suffix code	List price adder
1 N.O. 1 N.C.	CBK-CB10 CBK-CB01	10 01	\$ 8.00
1 N.O. & 1N.C. 2 N.O. 2 N.C.	CBK-CB10 + CBK-CB01 CBK-CB10 + CBK-CB10 CBK-CB01 + CBK-CB01	11 20 02	16.00

Pushbuttons are complete except for contact blocks:

- To order a pushbutton operator complete with contact block, add the appropriate suffix code to the end of the catalog number and add the list price adder to the operator list price. EX: CBK-KPR10, **\$ 16.10**
- To order just the contact block, refer to "Separate contact blocks" column and indicate catalog number and quantity. EX: CBK-CB10, qty 1, **\$ 8.00**

Example of individual component ordering

$$\begin{array}{rcl}
 \text{CBK-KPR} & + & \text{CBK-CB10} & = & \text{CBK-KPR10} \\
 \$ 8.10 & & \$ 8.00 & & \$ 16.10
 \end{array}$$

5 Contact block holders (Maximum 6 contact blocks)

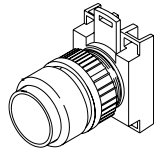
To order an assembled unit with a 5 contact block holder, add the digit "5" to the end of the catalog number and add \$ 4.00 to the list price. EX: CBK-KPR5, **\$ 12.10**

^① To order a lens insert, refer to the lens insert selection chart on pages 1.30 - 1.31 and place the appropriate suffix code at the end of the catalog number (but before the contact block suffix code, if there is one) and add \$.90 to the list price.

Flush & extended pushbuttons

Non-illuminated

Maintained



CBK-MPPR



CBK-MPPER



CBK-CB10



5 contact block holder

Non-illuminated, maintained — push-push

Type	Black plastic ring	Chrome plastic ring		Chrome metal ring	
	Catalog number	Catalog number	List price	Catalog number	List price
Flush button					
Red	CBK-KPPR	CBK-CPPR	\$ 19.30	CBK-MPPR	\$ 21.80
Green	CBK-KPPG	CBK-CPPG		CBK-MPPG	
Yellow	CBK-KPPY	CBK-CPPY		CBK-MPPY	
Blue	CBK-KPPL	CBK-CPPL		CBK-MPPL	
Black	CBK-KPPB	CBK-CPPB		CBK-MPPB	
Clear [Ⓞ]	CBK-KPPC	CBK-CPPC		CBK-MPPC	
White	CBK-KPPW	CBK-CPPW		CBK-MPPW	
Extended button					
Red	CBK-KPPER	CBK-CPPER	19.30	CBK-MPPER	21.80
Green	CBK-KPPEG	CBK-CPPEG		CBK-MPPEG	
Yellow	CBK-KPPEY	CBK-CPPEY		CBK-MPPEY	
Blue	CBK-KPEEL	CBK-CPPEL		CBK-MPEEL	
Black	CBK-KPPEB	CBK-CPPEB		CBK-MPPEB	
Clear [Ⓞ]	CBK-KPPEC	CBK-CPPEC		CBK-MPPEC	
White	CBK-KPPEW	CBK-CPPEW		CBK-MPPEW	

Contact blocks (Maximum 6 per operator)

Item	Separate contact blocks catalog number	Included with operator suffix code	List price adder
1 N.O. 1 N.C.	CBK-CB10 CBK-CB01	10 01	\$ 8.00
1 N.O. & 1N.C. 2 N.O. 2 N.C.	CBK-CB10 + CBK-CB01 CBK-CB10 + CBK-CB10 CBK-CB01 + CBK-CB01	11 20 02	16.00

Pushbuttons are complete except for contact blocks:

- To order a pushbutton operator complete with contact block, add the appropriate suffix code to the end of the catalog number and add the list price adder to the operator list price. EX: CBK-KPPR10, **\$ 27.30**
- To order just the contact block, refer to "Separate contact blocks" column and indicate catalog number and quantity. EX: CBK-CB10, qty 1, **\$ 8.00**

Example of individual component ordering

$$\text{CBK-KPPR} \quad + \quad \text{CBK-CB10} \quad = \quad \text{CBK-KPPR10}$$

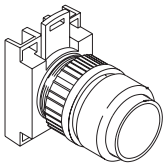
$$\text{\$ 19.30} \quad + \quad \text{\$ 8.00} \quad = \quad \text{\$ 27.30}$$

5 Contact block holders (Maximum 6 contact blocks)

To order an assembled unit with a 5 contact block holder, add the digit "5" to the end of the catalog number and add \$ 4.00 to the list price. EX: CBK-KPPR5, **\$ 23.30**

22 mm

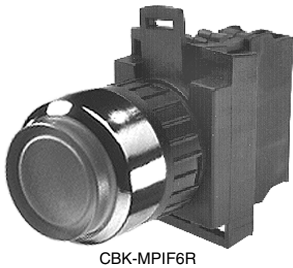
[Ⓞ] To order a lens insert, refer to the lens insert selection chart on pages 1.30 - 1.31 and place the appropriate suffix code at the end of the catalog number (but before the contact block suffix code, if there is one) and add \$.90 to the list price.



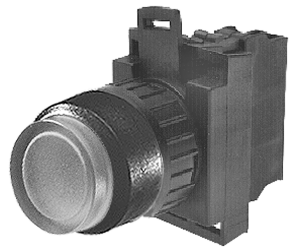
Extended pushbuttons

Illuminated

Momentary



CBK-MPIF6R



CBK-KPIF6R



CBK-CB10



5 contact block holder



Illuminated buttons

Illuminated, momentary (extended button)

Type	Black plastic ring	Chrome plastic ring		Chrome metal ring	
	Catalog number	Catalog number	List price	Catalog number	List price
Operator only Ⓞ	CBK-KPI★	CBK-CPI★	\$ 8.10	CBK-MPI★	\$ 10.60
Full voltage type					
6V	CBK-KPIF6★	CBK-CPIF6★	31.60	CBK-MPIF6★	34.10
12V	CBK-KPIF7★	CBK-CPIF7★			
24V	CBK-KPIF8★	CBK-CPIF8★			
48V	CBK-KPIF9★	CBK-CPIF9★			
120V	CBK-KPIF1★	CBK-CPIF1★			
Resistor type					
120V/60V	CBK-KPIR1★	CBK-CPIR1★	35.60	CBK-MPIR1★	38.10
240V/120V	CBK-KPIR2★	CBK-CPIR2★			
Transformer type					
120V/6V	CBK-KPIT1★	CBK-CPIT1★	66.60	CBK-MPIT1★	69.10
240V/6V	CBK-KPIT2★	CBK-CPIT2★			
380V/6V	CBK-KPIT3★	CBK-CPIT3★			
480V/6V	CBK-KPIT4★	CBK-CPIT4★			

★ Substitute the ★ for a suffix letter from the "Illuminated buttons" chart. Example: CBK-KPIF6R
 NOTE: If a flush button is desired, add "F" suffix after the ★. Example: CBK-KPIF6RF.

Illuminated LED bulb, momentary (extended button)ⓄⓄ

Type	Black plastic ring	Chrome plastic ring		Chrome metal ring	
	Catalog number	Catalog number	List price	Catalog number	List price
Full voltage type					
24V	CBK-KPIFL8★	CBK-CPIFL8★	\$ 40.60	CBK-MPIFL8★	\$ 43.10
120V	CBK-KPIFL1★	CBK-CPIFL1★	40.60	CBK-MPIFL1★	43.10
240V	CBK-KPIFL2★	CBK-CPIFL2★	46.60	CBK-MPIFL2★	49.10
Transformer type					
380V/24V	CBK-KPITL3★	CBK-CPITL3★	75.60	CBK-MPITL3★	78.10
480V/24V	CBK-KPITL4★	CBK-CPITL4★			

Contact blocks (Maximum 6 per operator)

Item	Separate contact blocks catalog number	Included with operator suffix code	List price adder
1 N.O. 1 N.C.	CBK-CB10 CBK-CB01	10 01	\$ 8.00
1 N.O. & 1 N.C. 2 N.O. 2 N.C.	CBK-CB10 + CBK-CB01 CBK-CB10 + CBK-CB10 CBK-CB01 + CBK-CB01	11 20 02	16.00

Pushbuttons are complete except for contact blocks:

- To order a pushbutton operator complete with contact block, add the appropriate suffix code to the end of the catalog number and add the list price adder to the operator list price. EX: CBK-KPIF6R10, \$ 39.60
- To order just the contact block, refer to "Separate Contact Blocks" column and indicate catalog number and quantity. EX: CBK-CB10, qty 1, \$ 8.00

Example of individual component ordering

$$\begin{array}{ccccccc}
 \text{CBK-KPIR} & + & \text{Transformer} & + & \text{Lamp module} & + & \text{Lamp bulb} \\
 \$ 8.10 & & \text{(if required)} & & \text{CBK-LMF} & & \text{CBK-LB6} \\
 & & & & \$ 17.50 & & \$ 6.00 \\
 & & & & & + & \text{CBK-CB10} \\
 & & & & & & \$ 8.00 \\
 & & & & & = & \text{CBK-KPIF6R10} \\
 & & & & & & \$ 39.60
 \end{array}$$

5 Contact block holders (Maximum 6 contact blocks)

To order an assembled unit with a 5 contact block holder, add the digit "5" to the end of the catalog number and add \$4.00 to the list price. EX: CBK-KPIF6R5, \$ 35.60

★ Illuminated buttons

Button color	Suffix code
Red	R
Green	G
Yellow	Y
Blue	L
Clear Ⓞ	C
White	W

Ⓞ Lamp module and bulb must be ordered separately; see pages 1.28 - 1.29.

Ⓞ White LEDs use clear lenses.

Ⓞ For blue or white LED, add \$ 3.00 to list price.

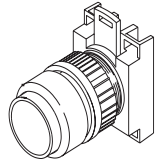
Ⓞ To order a lens insert, refer to the lens insert selection chart on pages 1.30 - 1.31 and place the appropriate suffix code at the end of the catalog number (but before the contact block suffix code, if there is one) and add \$.90 to the list price.

22 mm

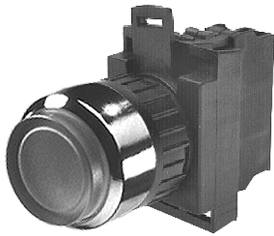
Extended pushbuttons

Illuminated

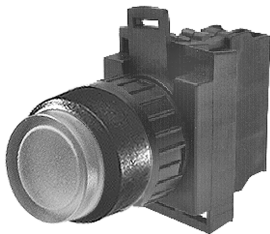
Maintained



22 mm



CBK-MPIF6R



CBK-KPIF6R



CBK-CB10



5 contact block holder

Illuminated, maintained push-push (extended)

Type	Black plastic ring		Chrome plastic ring		Chrome metal ring	
	Catalog number	Catalog number	List price	Catalog number	List price	
Operator only ⓐ	CBK-KPPI★	CBK-CPPI★	\$ 19.30	CBK-MPPI★	\$ 21.80	
Full voltage type						
6V	CBK-KPPIF6★	CBK-CPPIF6★	42.80	CBK-MPPIF6★	45.30	
12V	CBK-KPPIF7★	CBK-CPPIF7★				
24V	CBK-KPPIF8★	CBK-CPPIF8★				
48V	CBK-KPPIF9★	CBK-CPPIF9★				
120V	CBK-KPPIF1★	CBK-CPPIF1★				
Resistor type						
120V/60V	CBK-KPPIR1★	CBK-CPPIR1★	47.30	CBK-MPPIR1★	49.80	
240V/120V	CBK-KPPIR2★	CBK-CPPIR2★				
Transformer type						
120V/6V	CBK-KPPIT1★	CBK-CPPI1★	78.30	CBK-MPPIT1★	80.80	
240V/6V	CBK-KPPIT2★	CBK-CPPI2★				
380V/6V	CBK-KPPIT3★	CBK-CPPI3★				
480V/6V	CBK-KPPIT4★	CBK-CPPI4★				

★ Substitute the ★ for a suffix letter from the Illuminated buttons chart. Example: CBK-KPPIF6R
NOTE: If a flush button is desired, add "F" suffix after the ★. Example: CBK-KPPIF6RF.

Illuminated LED bulb, maintained push-push (extended)ⓑⓓ

Item	Black plastic ring		Chrome plastic ring		Chrome metal ring	
	Catalog number	Catalog number	List price	Catalog number	List price	
Full voltage type						
24V	CBK-KPPIFL8★	CBK-CPPIFL8★	\$ 51.80	CBK-MPPIFL8★	\$ 54.30	
120V	CBK-KPPIFL1★	CBK-CPPIFL1★				
240V	CBK-KPPIFL2★	CBK-CPPIFL2★				
Transformer type						
380V/24V	CBK-KPPITL3★	CBK-CPPI3★	86.80	CBK-MPPITL3★	89.30	
480V/24V	CBK-KPPITL4★	CBK-CPPI4★				

Contact blocks (Maximum 6 per operator)

Item	Separate contact blocks catalog number	Included with operator suffix code	List price adder
1 N.O. 1 N.C.	CBK-CB10 CBK-CB01	10 01	\$ 8.00
1 N.O. & 1N.C. 2 N.O. 2 N.C.	CBK-CB10 + CBK-CB01 CBK-CB10 + CBK-CB10 CBK-CB01 + CBK-CB01	11 20 02	16.00

Pushbuttons are complete except for contact blocks:

- To order a pushbutton operator complete with contact block, add the appropriate suffix code to the end of the catalog number and add the list price adder to the operator list price. EX: CBK-KPPIF6R10, \$ 50.80
- To order just the contact block, refer to "Separate contact blocks" column and indicate catalog number and quantity. EX: CBK-CB10, qty 1, \$ 8.00

Example of individual component ordering

$$\text{CBK-KPPIR} + \text{Transformer (if required)} + \text{Lamp module CBK-LMF } \$ 17.50 + \text{Lamp bulb CBK-LB6 } \$ 6.00 + \text{CBK-CB10 } \$ 8.00 = \text{CBK-KPPIF6R10 } \$ 50.80$$

5 Contact block holders (Maximum 6 contact blocks)

To order an assembled unit with a 5 contact block holder, add the digit "5" to the end of the catalog number and add \$ 4.00 to the list price. EX: CBK-KPPIF6R5, \$ 46.80

★ Illuminated buttons

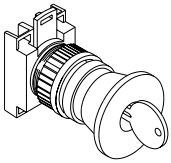
Button color	Suffix code
Red	R
Green	G
Yellow	Y
Blue	L
Clear ⓐ	C
White	W

ⓐ Lamp module and bulb must be ordered separately; see pages 1.28 - 1.29.

ⓑ White LEDs use clear lenses.

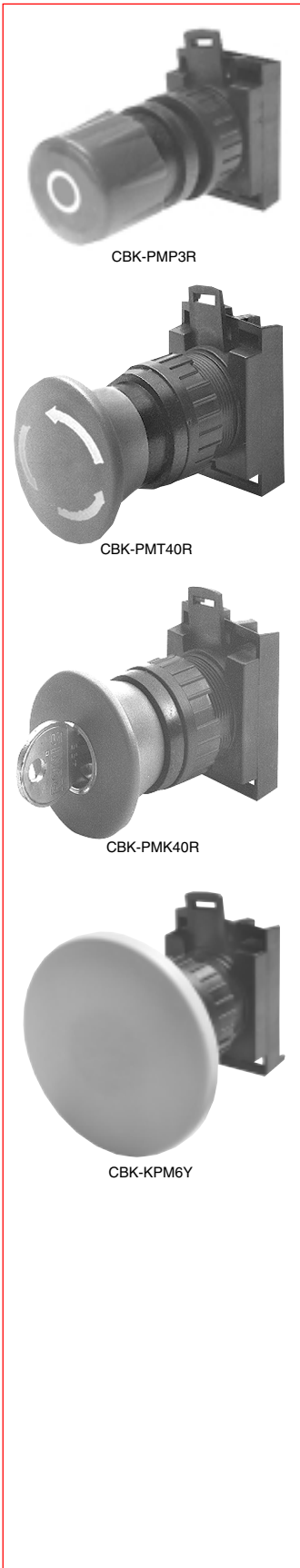
ⓓ For blue or white LED, add \$ 3.00 to list price.

ⓔ To order a lens insert, refer to the lens insert selection chart on pages 1.30 - 1.31 and place the appropriate suffix code at the end of the catalog number (but before the contact block suffix code, if there is one) and add \$.90 to the list price.



Mushroom pushbuttons, 30mm, 40mm & 60mm^①

Non-illuminated standard and lockable



CBK-PMP3R

CBK-PMT40R

CBK-PMK40R

CBK-KPM6Y

Mushroom pushbuttons — standard

Type	Color	Catalog number	List price
30mm Twist-release	Red	CBK-PMT3R	\$ 32.00
	Black	CBK-PMT3B	
Push-pull	Red	CBK-PMP3R	32.00
	Black	CBK-PMP3B	
40mm Momentary	Red	CBK-KPM40R	18.00
	Yellow	CBK-KPM40Y	
	Black	CBK-KPM40B	
Twist-release	Red	CBK-PMT40R	36.00
	Black	CBK-PMT40B	
Push-pull	Red	CBK-PMP40R	36.00
	Black	CBK-PMP40B	
60mm Momentary	Red	CBK-KPM6R	22.00
	Yellow	CBK-KPM6Y	
	Black	CBK-KPM6B	

Mushroom pushbuttons — lockable plastic mushroom

Type	Color	Catalog number	List price
40mm Maintained, Key release	Red	CBK-PMK40R	\$ 55.00
	Black	CBK-PMK40B	

Contact blocks (Maximum 5 per operator)

Item	Separate contact blocks catalog number	Included with operator suffix code	List price adder
1 N.O. 1 N.C.	CBK-CB10 CBK-CB01	10 01	\$ 8.00
1 N.O. & 1N.C. 2 N.O. 2 N.C.	CBK-CB10 + CBK-CB01 CBK-CB10 + CBK-CB10 CBK-CB01 + CBK-CB01	11 20 02	16.00

Mushroom pushbuttons are complete except for contact blocks:

- To order a mushroom pushbutton operator complete with contact block, add the appropriate suffix code to the end of the catalog number and add the list price adder to the operator list price. EX: CBK-PMT3R10, \$ 40.00
- To order just the contact block, refer to "Separate contact blocks" column and indicate catalog number and quantity. EX: CBK-CB10, qty 1, \$ 8.00

Example of individual component ordering

$$\text{CBK-PMT3R} + \text{CBK-CB10} = \text{CBK-PMT3R10}$$

$$\text{\$ 32.00} + \text{\$ 8.00} = \text{\$ 40.00}$$

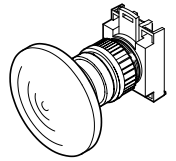
5 Contact block holders (Maximum 5 contact blocks)

To order an assembled unit with a 5 contact block holder, add the digit "5" to the end of the catalog number and add \$ 4.00 to the list price. EX: CBK-PMT3R5, \$ 36.00

^① See pages 1.11 – 1.13 for emergency stop pushbuttons which comply with EN418 and IEC947-5-5 standards.

Mushroom pushbuttons, 40mm

Illuminated, momentary



CBK-MPM40IF1Y



CBK-KPM40IF1Y



CBK-CB10



5 contact block holder

Illuminated mushrooms, 40mm

Type	Black plastic ring	Chrome plastic ring		Chrome metal ring	
	Catalog number	Catalog number	List price	Catalog number	List price
Operator only ①	CBK-KPM40I★	CBK-CPM40I★	\$ 17.50	CBK-MPM40I★	\$ 20.00
Full voltage type					
6V	CBK-KPM40IF6★	CBK-CPM40IF6★	41.00	CBK-MPM40IF6★	43.50
12V	CBK-KPM40IF7★	CBK-CPM40IF7★			
24V	CBK-KPM40IF8★	CBK-CPM40IF8★			
48V	CBK-KPM40IF9★	CBK-CPM40IF9★			
120V	CBK-KPM40IF1★	CBK-CPM40IF1★			
Resistor type					
120V/60V	CBK-KPM40IR1★	CBK-CPM40IR1★	45.00	CBK-MPM40IR1★	47.50
240V/120V	CBK-KPM40IR2★	CBK-CPM40IR2★			
Transformer type					
120V/6V	CBK-KPM40IT1★	CBK-CPM40IT1★	76.00	CBK-MPM40IT1★	78.50
240V/6V	CBK-KPM40IT2★	CBK-CPM40IT2★			
380V/6V	CBK-KPM40IT3★	CBK-CPM40IT3★			
480V/6V	CBK-KPM40IT4★	CBK-CPM40IT4★			

Illuminated mushrooms with LED bulbs, 40mm

Type	Black plastic ring	Chrome plastic ring		Chrome metal ring	
	Catalog number	Catalog number	List price	Catalog number	List price
Full voltage type					
24V	CBK-KPM40IFL8★	CBK-CPM40IFL8★	\$ 50.00	CBK-MPM40IFL8★	\$ 52.50
120V	CBK-KPM40IFL1★	CBK-CPM40IFL1★	50.00	CBK-MPM40IFL1★	52.50
240V	CBK-KPM40IFL2★	CBK-CPM40IFL2★	56.00	CBK-MPM40IFL2★	58.50
Transformer type					
380V/24V	CBK-KPM40ITL3★	CBK-CPM40ITL3★	85.00	CBK-MPM40ITL3★	87.50
480V/24V	CBK-KPM40ITL4★	CBK-CPM40ITL4★			

22 mm

★ Illuminated buttons

Button color	Suffix code
Red	R
Green	G
Yellow	Y

Contact blocks (Maximum 5 per operator)

Item	Separate contact blocks catalog number	Included with operator suffix code	List price adder
1 N.O. 1 N.C.	CBK-CB10 CBK-CB01	10 01	\$ 8.00
1 N.O. & 1 N.C. 2 N.O. 2 N.C.	CBK-CB10 + CBK-CB01 CBK-CB10 + CBK-CB10 CBK-CB01 + CBK-CB01	11 20 02	16.00

Pushbuttons are complete except for contact blocks:

- To order a pushbutton operator complete with contact block, add the appropriate suffix code to the end of the catalog number and add the list price adder to the operator list price. EX: CBK-PM40IF1R10, \$ 49.00
- To order just the contact block, refer to "Separate contact blocks" column and indicate catalog number and quantity. EX: CBK-CB10, qty 1, \$ 8.00

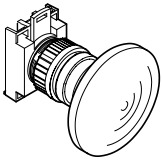
Example of individual component ordering

$$\begin{array}{r}
 \text{CBK-KPM40IR} + \text{Transformer} + \text{Lamp module} + \text{Lamp bulb} + \text{CBK-CB10} = \text{CBK-KPM40IF1R10} \\
 \$ 17.50 \quad (\text{if required}) \quad \$ 17.50 \quad \$ 6.00 \quad \$ 8.00 \quad \$ 49.00
 \end{array}$$

5 Contact block holders (Maximum 5 contact blocks)

To order an assembled unit with a 5 contact block holder, add the digit "5" to the end of the catalog number and add \$ 4.00 to the list price. EX: CBK-KPM40IF1R5, \$ 45.00

① Lamp module and bulb must be ordered separately; see pages 1.28 - 1.29.



Mushroom pushbuttons, 60mm Illuminated, momentary



22 mm

Illuminated mushrooms, 60mm

Type	Black plastic ring	Chrome plastic ring		Chrome metal ring	
	Catalog number	Catalog number	List price	Catalog number	List price
Operator only Ⓞ	CBK-KPM61★	CBK-CPM61★	\$ 21.50	CBK-MPM61★	\$ 24.00
Full voltage type 6V 12V 24V 48V 120V	CBK-KPM61F6★ CBK-KPM61F7★ CBK-KPM61F8★ CBK-KPM61F9★ CBK-KPM61F1★	CBK-CPM61F6★ CBK-CPM61F7★ CBK-CPM61F8★ CBK-CPM61F9★ CBK-CPM61F1★	45.00	CBK-MPM61F6★ CBK-MPM61F7★ CBK-MPM61F8★ CBK-MPM61F9★ CBK-MPM61F1★	47.50
Resistor type 120V/60V 240V/120V	CBK-KPM61R1★ CBK-KPM61R2★	CBK-CPM61R1★ CBK-CPM61R2★	49.00	CBK-MPM61R1★ CBK-MPM61R2★	51.50
Transformer type 120V/6V 240V/6V 380V/6V 480V/6V	CBK-KPM61T1★ CBK-KPM61T2★ CBK-KPM61T3★ CBK-KPM61T4★	CBK-CPM61T1★ CBK-CPM61T2★ CBK-CPM61T3★ CBK-CPM61T4★	80.00	CBK-MPM61T1★ CBK-MPM61T2★ CBK-MPM61T3★ CBK-MPM61T4★	82.50

Illuminated mushrooms with LED bulbs, 60mm

Type	Black plastic ring	Chrome plastic ring		Chrome metal ring	
	Catalog number	Catalog number	List price	Catalog number	List price
Full voltage type 24V 120V 240V	CBK-KPM61FL8★ CBK-KPM61FL1★ CBK-KPM61FL2★	CBK-CPM61FL8★ CBK-CPM61FL1★ CBK-CPM61FL2★	\$ 54.00 54.00 60.00	CBK-MPM61FL8★ CBK-MPM61FL1★ CBK-MPM61FL2★	\$ 56.50 56.50 62.50
Transformer type 380V/24V 480V/24V	CBK-KPM61TL3★ CBK-KPM61TL4★	CBK-CPM61TL3★ CBK-CPM61TL4★	89.00	CBK-MPM61TL3★ CBK-MPM61TL4★	91.50

★ Illuminated buttons

Button color	Suffix code
Red	R
Green	G
Yellow	Y

Contact blocks (Maximum 5 per operator)

Item	Separate contact blocks catalog number	Included with operator suffix code	List price adder
1 N.O. 1 N.C.	CBK-CB10 CBK-CB01	10 01	\$ 8.00
1 N.O. & 1N.C. 2 N.O. 2 N.C.	CBK-CB10 + CBK-CB01 CBK-CB10 + CBK-CB10 CBK-CB01 + CBK-CB01	11 20 02	16.00

Pushbuttons are complete except for contact blocks:

- To order a pushbutton operator complete with contact block, add the appropriate suffix code to the end of the catalog number and add the list price adder to the operator list price. EX: CBK-KPM61F1R10, \$ 53.00
- To order just the contact block, refer to "Separate contact blocks" column and indicate catalog number and quantity. EX: CBK-CB10, qty 1, \$ 8.00

Example of individual component ordering

$$\begin{array}{ccccccc}
 & & \text{Lamp module} & & \text{Lamp bulb} & & \\
 \text{CBK-KPM61R} & + & \text{Transformer} & + & \text{CBK-LMF} & + & \text{CBK-LB1} & + & \text{CBK-CB10} & = & \text{CBK-KPM61F1R10} \\
 \$ 21.50 & & \text{(if required)} & & \$ 17.50 & & \$ 6.00 & & \$ 8.00 & & \$ 53.00
 \end{array}$$

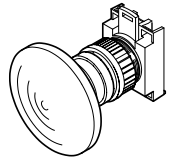
5 Contact block holders (Maximum 5 contact blocks)

To order an assembled unit with a 5 contact block holder, add the digit "5" to the end of the catalog number and add \$ 4.00 to the list price. EX: CBK-KPM61F1R5, \$ 49.00

Ⓞ Lamp module and bulb must be ordered separately; see pages 1.28 - 1.29.

Emergency stop pushbuttons^{①②}

Non-illuminated



22 mm



CBK-EST4R



CBK-ESP6R



CBK-ESCH



CBK-CB10

Non-illuminated operators

Type	Catalog number	List price adder
40mm Twist release ^③ Pull release	CBK-EST4R CBK-ESP4R	\$ 36.00
60mm Twist release ^③ Pull release	CBK-EST6R CBK-ESP6R	48.00

Contact block holder

Item	Catalog number	List price adder
Contact block holder	CBK-ESCH	\$ 2.00

Contact blocks (Maximum 4 per operator)

Item	Separate contact blocks catalog number	Included with operator suffix code	List price adder
1 N.O. 1 N.C.	CBK-CB10 CBK-CB01	10 01	\$ 8.00
1 N.O. & 1N.C. 2 N.O. 2 N.C.	CBK-CB10 + CBK-CB01 CBK-CB10 + CBK-CB10 CBK-CB01 + CBK-CB01	11 20 02	16.00

Pushbuttons are complete except for contact blocks:

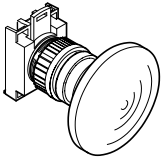
- To order a pushbutton operator complete with contact block, add the appropriate suffix code to the end of the catalog number and add the list price adder to the operator list price. EX: CBK-EST4R01, **\$ 44.00**
- To order just the contact block, refer to "Separate contact blocks" column and indicate catalog number and quantity. EX: CBK-CB01, qty 1, **\$ 8.00**

Example of individual component ordering

$$\text{CBK-EST4R} \quad \text{CBK-CB01} \quad \text{CBK-EST4R01}$$

$$\$ 36.00 \quad + \quad \$ 8.00 \quad = \quad \$ 44.00$$

① All operators on this page comply with EN418 & IEC947-5-5 standards.
 ② Use adapter plate described on page 1.37 when using CBK-EP series enclosures.
 ③ Can also be released by pulling.



Emergency stop pushbuttons, 40mm^{①②} Illuminated



CBK-EST4IF1R

CBK-ESP4IF1R

CBK-ESCH

CBK-CB10

Illuminated emergency stop pushbuttons, 40mm

Type	Twist release ^③		Push-pull	
	Catalog number	List price	Catalog number	List price
Operator only ^④	CBK-EST4IR	\$ 36.00	CBK-ESP4IR	\$ 36.00
Full voltage type 6V 12V 24V 48V 120V	CBK-EST4IF6R CBK-EST4IF7R CBK-EST4IF8R CBK-EST4IF9R CBK-EST4IF1R	59.50	CBK-ESP4IF6R CBK-ESP4IF7R CBK-ESP4IF8R CBK-ESP4IF9R CBK-ESP4IF1R	59.50
Resistor type 120V/60V 240V/120V	CBK-EST4IR1R CBK-EST4IR2R	63.50	CBK-ESP4IR1R CBK-ESP4IR2R	63.50
Transformer type 120V/6V 240V/6V 380V/6V 480V/6V	CBK-EST4IT1R CBK-EST4IT2R CBK-EST4IT3R CBK-EST4IT4R	94.50	CBK-ESP4IT1R CBK-ESP4IT2R CBK-ESP4IT3R CBK-ESP4IT4R	94.50

Illuminated emergency stop pushbuttons with LED bulbs, 40mm

Type	Twist release ^③		Push-pull	
	Catalog number	List price	Catalog number	List price
Operator only ^④ Order lamp module & bulb separately	CBK-EST4IR	\$ 36.00	CBK-ESP4IR	\$ 36.00
Full voltage type 24V 120V 240V	CBK-EST4IFL8R CBK-EST4IFL1R CBK-EST4IFL2R	68.50 68.50 74.50	CBK-ESP4IFL8R CBK-ESP4IFL1R CBK-ESP4IFL2R	68.50 68.50 74.50
Transformer type 380V/24V 480V/24V	CBK-EST4ITL3R CBK-EST4ITL4R	103.50	CBK-ESP4ITL3R CBK-ESP4ITL4R	103.50

Contact block holder

Item	Catalog number	List price adder
Contact block holder	CBK-ESCH	\$ 2.00

Contact blocks (Maximum 4 per operator)

Item	Separate contact blocks catalog number	Included with operator suffix code	List price adder
1 N.O. 1 N.C.	CBK-CB10 CBK-CB01	10 01	\$ 8.00
1 N.O. & 1N.C. 2 N.O. 2 N.C.	CBK-CB10 + CBK-CB01 CBK-CB10 + CBK-CB10 CBK-CB01 + CBK-CB01	11 20 02	16.00

Pushbuttons are complete except for contact blocks:

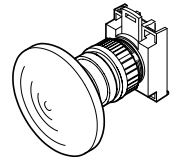
- To order a pushbutton operator complete with contact block, add the appropriate suffix code to the end of the catalog number and add the list price adder to the operator list price. EX: CBK-EST4IF1R01, **\$ 67.50**
- To order just the contact block, refer to "Separate contact blocks" column and indicate catalog number and quantity. EX: CBK-CB01, qty 1, **\$ 8.00**

Example of individual component ordering

$$\begin{array}{r}
 \text{CBK-EST4IR} \\
 \$ 36.00
 \end{array}
 + \begin{array}{r}
 \text{Transformer} \\
 \text{(if required)}
 \end{array}
 + \begin{array}{r}
 \text{Lamp module} \\
 \text{CBK-LMF} \\
 \$ 17.50
 \end{array}
 + \begin{array}{r}
 \text{Lamp bulb} \\
 \text{CBK-LB1} \\
 \$ 6.00
 \end{array}
 + \begin{array}{r}
 \text{CBK-CB01} \\
 \$ 8.00
 \end{array}
 = \begin{array}{r}
 \text{CBK-EST4IF1R01} \\
 \$ 67.50
 \end{array}$$

^① All operators on this page comply with EN418 & IEC947-5-5 standards.
^② Use adapter plate described on page 1.37 when using CBK-EP series enclosures.
^③ Can also be released by pulling.
^④ Lamp module and bulb must be ordered separately; see pages 1.28 - 1.29.

Emergency stop pushbuttons, 60mm^{①②} Illuminated



Illuminated emergency stop pushbuttons, 60mm

Type	Twist release ^③		Push-pull	
	Catalog number	List price	Catalog number	List price
Operator only ^④	CBK-EST6IR	\$ 48.00	CBK-ESP6IR	\$ 48.00
Full voltage type 6V 12V 24V 48V 120V	CBK-EST6IF6R CBK-EST6IF7R CBK-EST6IF8R CBK-EST6IF9R CBK-EST6IF1R	71.50	CBK-ESP6IF6R CBK-ESP6IF7R CBK-ESP6IF8R CBK-ESP6IF9R CBK-ESP6IF1R	71.50
Resistor type 120V/60V 240V/120V	CBK-EST6IR1R CBK-EST6IR2R	75.50	CBK-ESP6IR1R CBK-ESP6IR2R	75.50
Transformer type 120V/6V 240V/6V 380V/6V 480V/6V	CBK-EST6IT1R CBK-EST6IT2R CBK-EST6IT3R CBK-EST6IT4R	106.50	CBK-ESP6IT1R CBK-ESP6IT2R CBK-ESP6IT3R CBK-ESP6IT4R	106.50

Illuminated emergency stop pushbuttons with LED bulbs, 60mm

Type	Twist release ^③		Push-pull	
	Catalog number	List price	Catalog number	List price
Operator only ^④ Order lamp module & bulb separately	CBK-EST6IR	\$ 48.00	CBK-ESP6IR	\$ 48.00
Full voltage type 24V 120V 240V	CBK-EST6IFL8R CBK-EST6IFL1R CBK-EST6IFL2R	80.50 80.50 86.50	CBK-ESP6IFL8R CBK-ESP6IFL1R CBK-ESP6IFL2R	80.50 80.50 86.50
Transformer type 380V/24V 480V/24V	CBK-EST6ITL3R CBK-EST6ITL4R	115.50	CBK-ESP6ITL3R CBK-ESP6ITL4R	115.50

Contact block holder

Item	Catalog number	List price adder
Contact block holder	CBK-ESCH	\$ 2.00

Contact blocks (Maximum 4 per operator)

Item	Separate contact blocks catalog number	Included with operator suffix code	List price adder
1 N.O. 1 N.C.	CBK-CB10 CBK-CB01	10 01	\$ 8.00
1 N.O. & 1 N.C. 2 N.O. 2 N.C.	CBK-CB10 + CBK-CB01 CBK-CB10 + CBK-CB10 CBK-CB01 + CBK-CB01	11 20 02	16.00

Pushbuttons are complete except for contact blocks:

- To order a pushbutton operator complete with contact block, add the appropriate suffix code to the end of the catalog number and add the list price adder to the operator list price. EX: CBK-EST6IF1R01, **\$ 79.50**
- To order just the contact block, refer to "Separate contact blocks" column and indicate catalog number and quantity. EX: CBK-CB01, qty 1, **\$ 8.00**

Example of individual component ordering

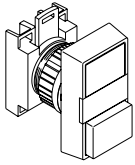
$$\begin{array}{ccccccc}
 & & \text{Lamp module} & \text{Lamp bulb} & & & \\
 \text{CBK-EST6IR} & + & \text{Transformer} & + & \text{CBK-LMF} & + & \text{CBK-LB1} & + & \text{CBK-CB01} & = & \text{CBK-EST6IF1R01} \\
 \$ 48.00 & & \text{(if required)} & & \$ 17.50 & & \$ 6.00 & & \$ 8.00 & & \$ 79.50
 \end{array}$$

① All operators on this page comply with EN418 & IEC947-5-5 standards.

② Use adapter plate described on page 1.37 when using CBK-EP series enclosures.

③ Can also be released by pulling.

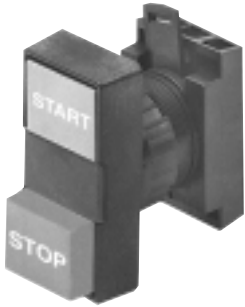
④ Lamp module and bulb must be ordered separately; see pages 1.28 - 1.29.



Two button pushbuttons

Momentary

Non-illuminated



CBK-2P1



CBK-CB10



5 contact block holder

Two button pushbuttons — momentary

Engraving	Description	Catalog number	List price
On/Off	Flush green & flush red buttons	CBK-2P7	\$ 23.00
	Flush green & extended red buttons	CBK-2P8	
	Flush white & flush black buttons	CBK-2P2	
	Flush white & extended black buttons	CBK-2P9	
Start/Stop	Flush green & flush red buttons	CBK-2P10	23.00
	Flush green & extended red buttons	CBK-2P1	
	Flush white & flush black buttons	CBK-2P11	
	Flush white & extended black buttons	CBK-2P12	
	Flush black & extended red buttons	CBK-2P6	
I/O	Flush green & flush red buttons	CBK-2P3	23.00
	Flush green & extended red buttons	CBK-2P13	
	Flush white & flush black buttons	CBK-2P14	
	Flush white & extended black buttons	CBK-2P15	
Up/Down	Flush green and flush red buttons	CBK-2P4UD	23.00
Blank	Flush green & flush red buttons	CBK-2P4	20.00
	Flush green & extended red buttons	CBK-2P16	
	Flush white & flush black buttons	CBK-2P5	
	Flush white & extended black buttons	CBK-2P17	
	Flush black & extended red buttons	CBK-2P18	

NOTE: For UL Type 3R, 4, 4X, 12 & 13 applications, use the CBK-XB2 boot. See Accessories, page 1.35.

Contact blocks (Maximum 4 per operator)

Item	Separate contact blocks catalog number	Included with operator suffix code	List price adder
1 N.O.	CBK-CB10	10	\$ 8.00
1 N.C.	CBK-CB01	01	
1 N.O. & 1N.C.	CBK-CB10 + CBK-CB01	11	16.00
2 N.O.	CBK-CB10 + CBK-CB10	20	
2 N.C.	CBK-CB01 + CBK-CB01	02	

Pushbuttons are complete except for contact blocks:

- To order a pushbutton operator complete with contact block, add the appropriate suffix code to the end of the catalog number and add the list price adder to the operator list price. EX: CBK-2P610, **\$ 31.00**
- To order just the contact block, refer to "Separate contact blocks" column and indicate catalog number and quantity. EX: CBK-CB10, qty 1, **\$ 8.00**

Example of individual component ordering

$$\begin{array}{r}
 \text{CBK-2P1} \\
 \$ 23.00
 \end{array}
 +
 \begin{array}{r}
 \text{CBK-CB01} \\
 \$ 8.00
 \end{array}
 +
 \begin{array}{r}
 \text{CBK-CB10} \\
 \$ 8.00
 \end{array}
 =
 \begin{array}{r}
 \text{CBK-2P111} \\
 \$ 39.00
 \end{array}$$

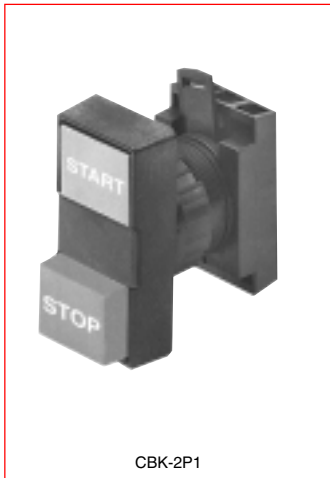
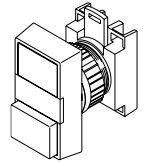
5 Contact block holders (Maximum 4 contact blocks)

To order an assembled unit with a 5 contact block holder, add the digit "A" to the end of the catalog number and add \$ 4.00 to the list price. EX: CBK-2P1A, **\$ 27.00**

Two button pushbuttons

Momentary

Illuminated





Two button pushbuttons — momentary^①

Engraving	Description	Catalog number	List price
On/Off	Flush green & flush red buttons	CBK-2P7★	\$ 31.00
	Flush green & extended red buttons	CBK-2P8★	
	Flush white & flush black buttons	CBK-2P2★	
	Flush white & extended black buttons	CBK-2P9★	
Start/Stop	Flush green & flush red buttons	CBK-2P10★	31.00
	Flush green & extended red buttons	CBK-2P1★	
	Flush white & flush black buttons	CBK-2P11★	
	Flush white & extended black buttons	CBK-2P12★	
	Flush black & extended red buttons	CBK-2P6★	
I/O	Flush green & flush red buttons	CBK-2P3★	31.00
	Flush green & extended red buttons	CBK-2P13★	
	Flush white & flush black buttons	CBK-2P14★	
	Flush white & extended black buttons	CBK-2P15★	
Blank	Flush green & flush red buttons	CBK-2P4★	28.00
	Flush green & extended red buttons	CBK-2P16★	
	Flush white & flush black buttons	CBK-2P5★	
	Flush white & extended black buttons	CBK-2P17★	
	Flush black & extended red buttons	CBK-2P18★	

★ Select the catalog number suffix for the lens insert color from "Lens insert colors" chart below.

NOTE: For UL Type 3R, 4, 4X, 12 & 13 applications, use the CBK-XB2 boot. See Accessories, page 1.35 or the chart below.

Lamp modules — operator mounted

Item	Voltage	Catalog number	List price
 CBK-LMF	Full voltage type	CBK-LMF	\$ 17.50
	Resistor type	CBK-LMR1	21.50
	120V/60V	CBK-LMR2	
	240V/120V	CBK-LMR24	
	24V ^②	CBK-LMLED	
 CBK-LT1	Transformer type	CBK-LT1	35.00
	120V/6V	CBK-LT2	
	240V/6V	CBK-LT3	
	380V/6V	CBK-LT4	
	480V/6V	CBK-LT124	
	120V/24V	CBK-LT224	
	240V/24V	CBK-LT324	
	380V/24V	CBK-LT424	
	480V/24V		

★ Lens insert colors

Color	Catalog. no. suffix
Green	G
Red	R
Yellow	Y
Clear	C




Protective boot

Item	Catalog number	List price
Flush boot for two button operator	CBK-XB2	\$ 8.00

Two button pushbuttons are complete except for lamp modules, lamp bulbs, transformers and contact blocks which should be ordered as separate components. EX: To order a start/stop operator with a red 120V full voltage pilot light:

• CBK-2PIR	\$ 31.00	• CBK-LB1	\$ 6.00
• CBK-LMF	17.50	• CBK-CB10	8.00
• CBK-LB1	6.00	• CBK-CB01	8.00
TOTAL	\$ 70.50		

Lamp bulbs

Item	Voltage	Catalog number	List price		
 Filament type CBK-LB6	Filament 6 VAC/DC 12 VAC/DC 24 VAC/DC 30 VAC/DC 48 VAC/DC 60 VAC/DC 130 VAC/DC	CBK-LB6	\$ 6.00		
		 Neon type CBK-LBN1		Neon^③ 110 VAC/DC 220 VAC 220 VDC	CBK-LBN1
					CBK-LB12
					CBK-LB24
					CBK-LB30
					CBK-LB48
					CBK-LB60
					CBK-LB1
					CBK-LBN1
					CBK-LBN2
CBK-LBND2					
 LED bulbs CBK-LBD1R	LED bulbs	Color			
		Standard Red	24 VAC/DC	CBK-LBD8R	15.00
			120 VAC	CBK-LBD1R	15.00
			230 VAC	CBK-LBD2R	21.00
		Green	24 VAC/DC	CBK-LBD8G	15.00
			120 VAC	CBK-LBD1G	15.00
			230 VAC	CBK-LBD2G	21.00
		Yellow	24 VAC/DC	CBK-LBD8Y	15.00
			120 VAC	CBK-LBD1Y	15.00
			230 VAC	CBK-LBD2Y	21.00
		Blue	24 VAC/DC	CBK-LBD8L	18.00
			120 VAC	CBK-LBD1L	18.00
			230 VAC	CBK-LBD2L	24.00
		White	24 VAC/DC	CBK-LBD8W	18.00
			120 VAC	CBK-LBD1W	18.00
230 VAC	CBK-LBD2W		24.00		
Flashing Red	24 VDC	CBK-LBDRF	20.00		
	Green	CBK-LBDGF			
	Yellow	CBK-LBDYF			

22 mm

Contact blocks (Maximum 4 per operator)

Item	Separate contact blocks catalog number	Included with operator suffix code	List price adder
1 N.O.	CBK-CB10	10	\$ 8.00
1 N.C.	CBK-CB01	01	
1 N.O. & 1 N.C.	CBK-CB10 + CBK-CB01	11	16.00
2 N.O.	CBK-CB10 + CBK-CB10	20	
2 N.C.	CBK-CB01 + CBK-CB01	02	

5 Contact block holders

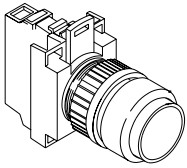
To order an assembled unit with a 5 contact block holder, add the digit "A" to the end of the catalog number and add \$ 4.00 to the list price.
EX: CBK-2P1A, \$ 35.00

① Price includes operator only. Lamp modules, lamp bulbs, transformers and contact blocks must be ordered separately from the above tables.

② Designed for electronic circuits. The resistor limits the making current and prevents disturbances in the circuit. 24V filament lamp bulb required.

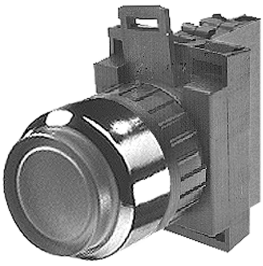
③ Designed for LED 24V bulbs.

④ Use with red, yellow and clear lenses only.

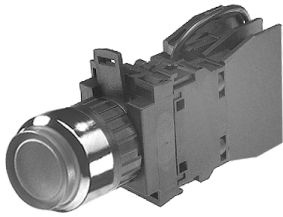


Press-to-test pushbuttons Illuminated

22 mm



CBK-MLFPT1Y



CBK-MLTPT1Y



Illuminated buttons

Press-to-test

Type	Black plastic ring	Chrome plastic ring		Chrome metal ring	
	Catalog number	Catalog number	List price	Catalog number	List price
Operator only Ⓞ	CBK-KLPT★	CBK-CLPT★	\$ 22.50	CBK-MLPT★	\$ 25.00
Full voltage type					
6V	CBK-KLFPT6★	CBK-CLFPT6★	46.00	CBK-MLFPT6★	48.50
12V	CBK-KLFPT7★	CBK-CLFPT7★			
24V	CBK-KLFPT8★	CBK-CLFPT8★			
48V	CBK-KLFPT9★	CBK-CLFPT9★			
120V	CBK-KLFPT1★	CBK-CLFPT1★			
Resistor type					
120V	CBK-KLRPT1★	CBK-CLRPT1★	54.00	CBK-MLRPT1★	56.50
240V	CBK-KLRPT2★	CBK-CLRPT2★			
Transformer type					
120V/6V	CBK-KLTPT1★	CBK-CLTPT1★	80.00	CBK-MLTPT1★	82.50
240V/6V	CBK-KLTPT2★	CBK-CLTPT2★			
380V/6V	CBK-KLTPT3★	CBK-CLTPT3★			
480V/6V	CBK-KLTPT4★	CBK-CLTPT4★			

★ Select the lens color from the "Illuminated buttons & lenses" selection chart and substitute the suffix code for the ★. The lens and bulb are included in the price.

Press-to-test (LED bulb)Ⓢ

Type	Black plastic ring	Chrome plastic ring		Chrome metal ring	
	Catalog number	Catalog number	List price	Catalog number	List price
Full voltage type					
24V	CBK-KLFPTL8★	CBK-CLFPTL8★	\$ 55.00	CBK-MLFPTL8★	\$ 57.50
120V	CBK-KLFPTL1★	CBK-CLFPTL1★			
230V	CBK-KLFPTL2★	CBK-CLFPTL2★	61.00	CBK-MLFPTL2★	63.50
Transformer type					
380V/24V	CBK-KLTPTL3★	CBK-CLTPTL3★	80.00	CBK-MLTPTL3★	82.50
480V/24V	CBK-KLTPTL4★	CBK-CLTPTL4★			

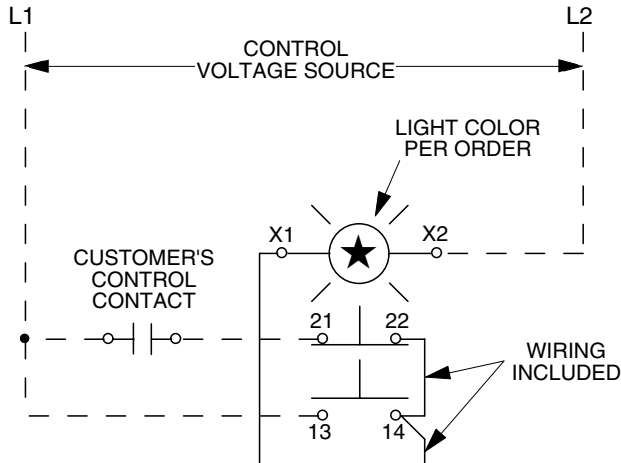
★ Select the lens color from the "Illuminated buttons & lenses" selection chart and substitute the suffix code for the ★. The lens and bulb are included in the price.

★ Illuminated buttons

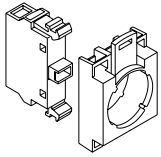
Button color	Suffix code
Red	R
Green	G
Yellow	Y
Blue	L
Clear	C
White	W

NOTE: White LEDs use clear lenses.

Schematic



Ⓞ 1 N.O. & 1 N.C. contact supplied; lamp module and bulb must be ordered separately.
 Ⓢ For blue or white LEDs, add \$ 3 to the list price.



Components

Contact blocks & holders

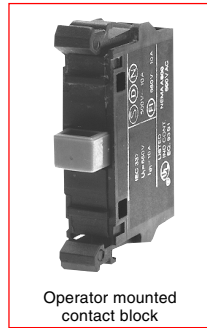
Operator mounted contacts

All CBK contact blocks, lamp modules and transformers can be used with CBK 22mm and CBG 30mm operators.

Contact blocks are color coded to easily identify the contact configuration:

- Green — Normally Open (N.O.) contacts
- Red — Normally Closed (N.C.) contacts

In addition, they snap-on to the operator for time saving installation



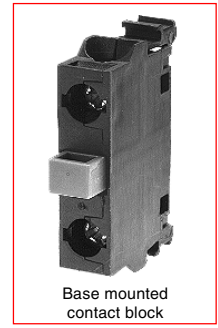
Base mounted contacts

Base mounted contact blocks are used in 22mm enclosures and on 35mm DIN rail and are available in the compact CBK design.


Up to 5 contact blocks can be mounted per pushbutton in some combinations.

The wiring stays with the enclosure base; the operators can be removed with the cover.

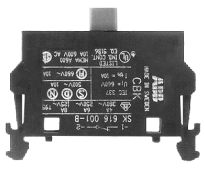
For complete DIN rail mounting kit, see page 1.36



Contact blocks — operator mounted

Item	Contact configuration	Catalog number	List price
 CBK-CB10	1 N.O. 1 N.C.	CBK-CB10 CBK-CB01	\$ 8.00
	Gold plated low energy contacts, 24VAC, 5mA		
	1 N.O. 1 N.C.	CBK-CB10G CBK-CB01G	16.00
CBK-XBB	Dummy block	CBK-XBB	2.00

Contact blocks — base mounted

Item	Contact configuration	Catalog number	List price
 CBK-CBR10	1 N.O. 1 N.C.	CBK-CBR10 CBK-CBR01	\$ 8.00
	Gold plated low energy contacts, 24VAC, 5mA		
	1 N.O. 1 N.C.	CBK-CBR10G CBK-CBR01G	16.00

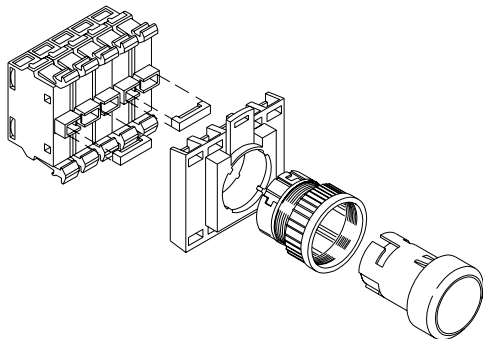
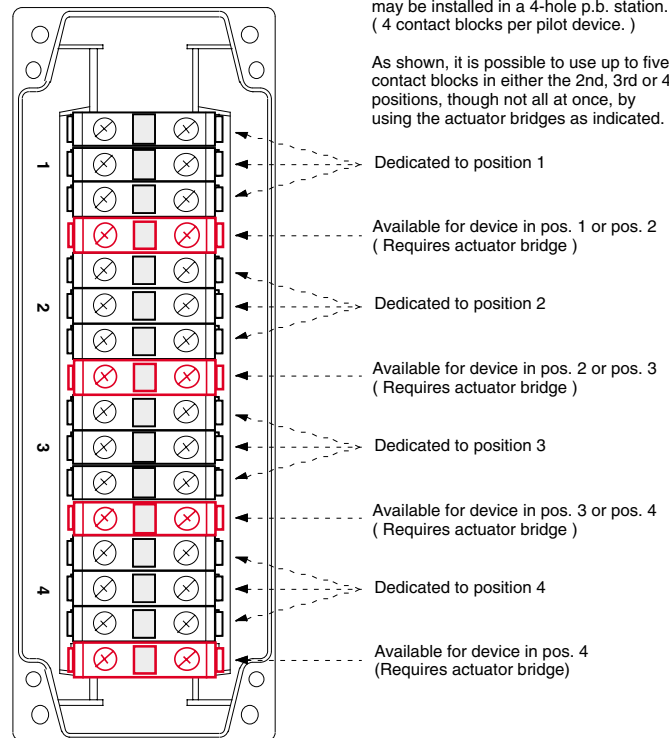
Possible base mounted contact block mounting configurations

Contact block holder

Item	Catalog number	List price	
 CBK-H5	5 block holder includes two CBK-AB bridges	CBK-H5	\$ 4.00
 CBK-AB	Bridges	CBK-AB	2.00
 CBK-CH	3 block holder	CBK-CH	2.00

Up to a maximum of 16 contact blocks may be installed in a 4-hole p.b. station. (4 contact blocks per pilot device.)

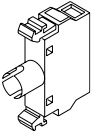
As shown, it is possible to use up to five contact blocks in either the 2nd, 3rd or 4th positions, though not all at once, by using the actuator bridges as indicated.





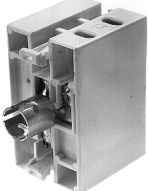

22 mm

Components


Lamp modules & transformers








Lamp modules & transformers — operator mounted

Item	Voltage	Catalog number	List price
 CBK-LMF	Lamp module		
	Full voltage type	CBK-LMF	\$ 17.50
 CBK-LMF	Resistor type		
	120V/60V 240V/120V 24V ^① 120V/24V ^②	CBK-LMR1 CBK-LMR2 CBK-LMR24 CBK-LMLED	21.50
 CBK-LMT1	Lamp module transformer		
	120V/6V 240V/6V 380V/6V 480V/6V 120V/24V 240V/24V 380V/24V 480V/24V	CBK-LMT1 CBK-LMT2 CBK-LMT3 CBK-LMT4 CBK-LMT124 CBK-LMT224 CBK-LMT324 CBK-LMT424	35.00
 CBK-LT1	Illuminated pushbutton transformer ^④		
	120V/6V 240V/6V 380V/6V 480V/6V 120V/24V 240V/24V 380V/24V 480V/24V	CBK-LT1 CBK-LT2 CBK-LT3 CBK-LT4 CBK-LT124 CBK-LT224 CBK-LT324 CBK-LT424	35.00

Lamp modules & transformers — base mounted

Item	Voltage	Catalog number	List price
 CBK-LMFB	Full voltage type	CBK-LMFB	\$ 17.50
	Resistor type		
	120V/60V 240V/120V	CBK-LMRB1 CBK-LMRB2	21.50

Lamp bulbs

Item	Voltage	Catalog number	List price
 CBK-LB6	Filament type		
	6 VAC/DC 12 VAC/DC 24 VAC/DC 30 VAC/DC 48 VAC/DC 60 VAC/DC 130 VAC/DC	CBK-LB6 CBK-LB12 CBK-LB24 CBK-LB30 CBK-LB48 CBK-LB60 CBK-LB1	\$ 6.00
 CBK-LBN1	Neon type		
	110 VAC/DC 220 VAC 220 VDC	CBK-LBN1 CBK-LBN2 CBK-LBND2	
 CBK-LBD1R	LED Bulbs ^④		
	Color		
 CBK-LBD1R	Standard		
	Red 24 VAC/DC	CBK-LBD8R	15.00
	120 VAC	CBK-LBD1R	15.00
	230 VAC	CBK-LBD2R	21.00
	Green 24 VAC/DC	CBK-LBD8G	15.00
	120 VAC	CBK-LBD1G	15.00
	230 VAC	CBK-LBD2G	21.00
	Yellow 24 VAC/DC	CBK-LBD8Y	15.00
	120 VAC	CBK-LBD1Y	15.00
	230 VAC	CBK-LBD2Y	21.00
	Blue 24 VAC/DC	CBK-LBD8L	18.00
	120 VAC	CBK-LBD1L	18.00
230 VAC	CBK-LBD2L	24.00	
 CBK-LBD1R	White 24 VAC/DC	CBK-LBD8W	18.00
	120 VAC	CBK-LBD1W	18.00
	230 VAC	CBK-LBD2W	24.00
	Flashing		
Red 24 VDC	CBK-LBDRF	20.00	
Green 24 VDC	CBK-LBDGF		
Yellow 24 VDC	CBK-LBDYF		

22 mm

Diode block


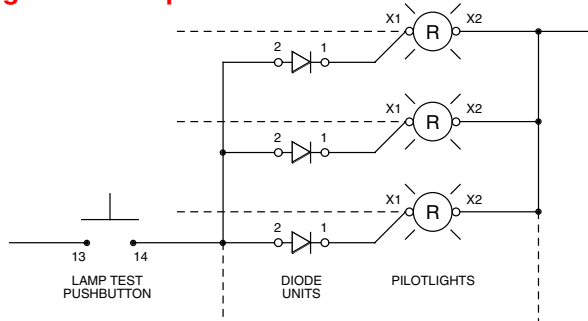
Item	Voltage	Catalog number	List price
 CBK-CBD	250V, 1A	CBK-CBD	\$ 14.00

Diagram for lamp test



WHEN SEVERAL PILOT LIGHTS ARE CONNECTED TO A COMMON LAMP TEST BUTTON, CONNECT A DIODE TO EACH PUSHBUTTON AS SHOWN. A SPECIAL DIODE BLOCK IS AVAILABLE FOR THIS PURPOSE.

- ① Designed for electronic circuits. The resistor limits the making current and prevents disturbances in the circuit. 24V filament bulb required.
- ② Designed for LED 24V bulbs.
- ③ Use with red, yellow and clear lenses only.
- ④ Mounts onto CBK-LMF.



Components

Pushbutton and pilot light lens inserts^①

Legend	Cap color	Suffix code ^②	Flush button catalog number	Extended button catalog number	Pilot light catalog number	List price
0	White Red Black	C21 C22 C23	CBK-KC21 CBK-KC22 CBK-KC23	CBK-KC21E CBK-KC22E —	CBK-KC21P — —	\$.90
I	White Red Black	C24 C25 C26	CBK-KC24 CBK-KC25 CBK-KC26	CBK-KC24E — —	CBK-KC24P — —	
II	White Red Black	C27 C28 C29	CBK-KC27 CBK-KC28 CBK-KC29	CBK-KC27E — —	CBK-KC27P — —	
III	White Black	C30 C31	CBK-KC30 CBK-KC31	CBK-KC30E —	— —	
+	White Red Black	C32 C33 C34	CBK-KC32 CBK-KC33 CBK-KC34	CBK-KC32E — —	— — —	
-	White Red Black	C35 C36 C37	CBK-KC35 CBK-KC36 CBK-KC37	CBK-KC35E — —	— — —	
	White Black	C13 C38	CBK-KC13 CBK-KC38	CBK-KC13E —	CBK-KC13P —	
	White Black	C39 C40	CBK-KC39 CBK-KC40	CBK-KC39E —	— —	
	White Black	C41 C42	CBK-KC41 CBK-KC42	CBK-KC41E —	— —	
	White Black	C43 C44	CBK-KC43 CBK-KC44	CBK-KC43E —	— —	
	White Black	C45 C46	CBK-KC45 CBK-KC46	CBK-KC45E —	— —	
	White	C14	CBK-KC14	CBK-KC14E	CBK-KC14P	
	White Black	C47 C48	CBK-KC47 CBK-KC48	CBK-KC47E —	— —	
	White Black	C49 C50	CBK-KC49 CBK-KC50	CBK-KC49E —	— —	
	White Black	C51 C52	CBK-KC51 CBK-KC52	CBK-KC51E —	— —	
	White Black	C53 C54	CBK-KC53 CBK-KC54	CBK-KC53E —	— —	
	White Black	C55 C56	CBK-KC55 CBK-KC56	CBK-KC55E —	— —	
	White Black	C57 C58	CBK-KC57 CBK-KC58	CBK-KC57E —	— —	
	White Black	C59 C60	CBK-KC59 CBK-KC60	CBK-KC59E —	— —	
	White Black	C61 C62	CBK-KC61 CBK-KC62	CBK-KC61E —	— —	
	White Black	C63 C64	CBK-KC63 CBK-KC64	CBK-KC63E —	— —	
	White Black	C65 C66	CBK-KC65 CBK-KC66	CBK-KC65E —	— —	
	White	C78	—	—	CBK-KC78P	
	White	C79	—	—	CBK-KC79P	
	White	C76	CBK-KC76	—	—	
	White	C77	CBK-KC77	—	—	
	White	C80	CBK-KC80	—	—	

① Illuminated pushbuttons and pilot lights must use white insert.

② For extended pushbuttons, insert "E" at the end of the catalog number. For pilot lights, insert "P" at end of the catalog number.

22 mm

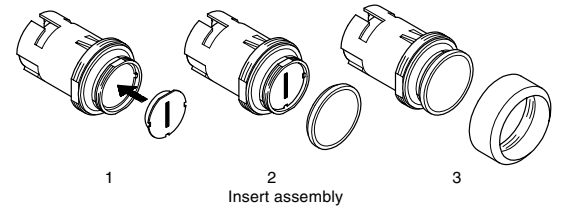
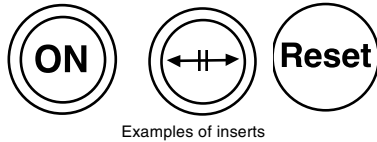
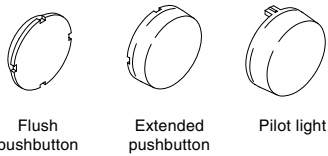
Components

Pushbutton and pilot light lens inserts^①



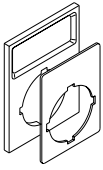
Legend	Cap color	Suffix code ^②	Flush button catalog number	Extended button catalog number	Pilot light catalog number	List price
	White	C82	CBK-KC82	—	—	\$.90
Start	White	C67	CBK-KC67	CBK-KC67E	CBK-KC67P	
START	Green Black	C5 C81	CBK-KC5 CBK-KC81	— —	— —	
On	White	C68	CBK-KC68	CBK-KC68E	CBK-KC68P	
ON	White Green Black	C69 C70 C1	CBK-KC69 CBK-KC70 CBK-KC1	— — —	CBK-KC69P — —	
Off	White	C71	CBK-KC71	CBK-KC71E	CBK-KC71P	
OFF	White Red Black	C72 C73 C2	— — CBK-KC2	CBK-KC72E CBK-KC73E CBK-KC2E	— — —	
Stop	White	C74	CBK-KC74	CBK-KC74E	CBK-KC74P	
STOP	Red	C4	CBK-KC4	CBK-KC4E	—	
Reset	White	C75	CBK-KC75	CBK-KC75E	CBK-KC75P	
Blank	White Green	C15 CG	CBK-KC15 CBK-KCG	CBK-KC15E CBK-KCEG	CBK-KC15P —	
UP	Green	C11	CBK-KC11	—	—	
DOWN	Green	C12	CBK-KC12	—	—	
OPEN	White Green	C16 C19	CBK-KC16 CBK-KC19	— —	— —	
CLOSE	White Green	C17 C20	CBK-KC17 CBK-KC20	— —	— —	
REV	Green	C6	CBK-KC6	—	—	
FWD	Green	C7	CBK-KC7	—	—	
SLOW	Green	C8	CBK-KC8	—	—	
FAST	Green	C9	CBK-KC9	—	—	
JOG	Green	C10	CBK-KC10	—	—	
RESET	Black	C3	CBK-KC3	—	—	
LATCH	White	C18	CBK-KC18	—	—	

22 mm



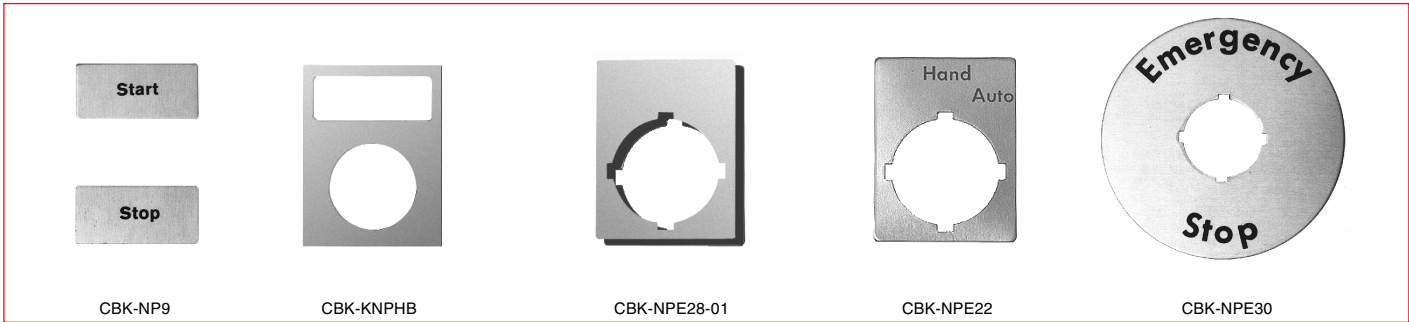
^① Illuminated pushbuttons and pilot lights must use white insert.

^② For extended pushbuttons, insert "E" at the end of the catalog number. For pilot lights, insert "P" at end of the catalog number.



Components

Nameplate inserts, fixed nameplates



Nameplate inserts — aluminum ^{①②}

Legend	Legend	Catalog number	List price
1 Position			
CLOSE	OPEN	CBK-NP1	\$.70
ON	OFF	CBK-NP2	
FAST	SLOW	CBK-NP3	
DOWN	UP	CBK-NP4	
EMERGENCY STOP	RELEASE	CBK-NP5	
CANCEL	RESET	CBK-NP6	
IN	OUT	CBK-NP7	
LOWER	RAISE	CBK-NP8	
START	STOP	CBK-NP9	
INCHING	JOG	CBK-NP10	
RUN	FULL	CBK-NP11	
FORWARD	REVERSE	CBK-NP12	
2 Position (BC Position)			
OFF/ON	STOP/START	CBK-NP13	.70
LOW/HIGH	SLOW/FAST	CBK-NP14	
CLOSE/OPEN	JOG/RUN	CBK-NP15	
HAND/AUTO	O/I	CBK-NP16	
2 Position (AC Position)			
OFF/ON	STOP/START	CBK-NP13AC	.70
LOW/HIGH	SLOW/FAST	CBK-NP14AC	
CLOSE/OPEN	JOG/RUN	CBK-NP15AC	
HAND/AUTO	O/I	CBK-NP16AC	
3 Position			
HAND/O/AUTO	I/O/II	CBK-NP17	.70
SLOW/OFF/FAST	BLANK	CBK-NP18	
Blank			
BLANK (Aluminum)	BLANK	CBK-NP19	.70
Custom engraving			
NOTE: For custom engraving instructions, please see "Ordering instructions" pg. 1.33			.90

Fixed nameplates — plastic and aluminum

Legend	Plastic finish	Aluminum finish	List price
1 Position			
CLOSE	CBK-NPE1BA	CBK-NPE1	\$ 1.50
DOWN	CBK-NPE2BA	CBK-NPE2	
EMERGENCY STOP	CBK-NPE3BA	CBK-NPE3	
FAST	CBK-NPE4BA	CBK-NPE4	
FORWARD	CBK-NPE5BA	CBK-NPE5	
INCHING	CBK-NPE6BA	CBK-NPE6	
IN	CBK-NPE7BA	CBK-NPE7	
LEFT	CBK-NPE8BA	CBK-NPE8	
LOWER	CBK-NPE9BA	CBK-NPE9	
OFF	CBK-NPE10BA	CBK-NPE10	
ON	CBK-NPE11BA	CBK-NPE11	
OPEN	CBK-NPE12BA	CBK-NPE12	
RAISE	CBK-NPE13BA	CBK-NPE13	
RESET	CBK-NPE14BA	CBK-NPE14	
REVERSE	CBK-NPE15BA	CBK-NPE15	
RUN	CBK-NPE16BA	CBK-NPE16	
RIGHT	CBK-NPE17BA	CBK-NPE17	
SLOW	CBK-NPE18BA	CBK-NPE18	
START	CBK-NPE19BA	CBK-NPE19	
STOP	CBK-NPE20BA	CBK-NPE20	
UP	CBK-NPE21BA	CBK-NPE21	
2 Position (BC Position)			
HAND/AUTO	CBK-NPE22BA	CBK-NPE22	1.50
JOG/RUN	CBK-NPE23BA	CBK-NPE23	
OFF/ON	CBK-NPE24BA	CBK-NPE24	
STOP/START	CBK-NPE25BA	CBK-NPE25	
FWD/REV	CBK-NPE32BA	CBK-NPE32	
2 Position (AC Position)			
HAND/AUTO	CBK-NPE22BAAC	CBK-NPE22AC	1.50
JOG/RUN	CBK-NPE23BAAC	CBK-NPE23AC	
OFF/ON	CBK-NPE24BAAC	CBK-NPE24AC	
STOP/START	CBK-NPE25BAAC	CBK-NPE25AC	
FWD/REV	CBK-NPE32BAAC	CBK-NPE32AC	
3 Position			
HAND/O/AUTO	CBK-NPE26BA	CBK-NPE26	1.50
SLOW/OFF/FAST	CBK-NPE27BA	CBK-NPE27	
LOW/OFF/HIGH	CBK-NPE31BA	CBK-NPE31	
Blank			
BLANK — Aluminum (1-2 line)		CBK-NPE28	1.50
BLANK — Aluminum (1-3 line)		CBK-NPE29	
BLANK — Plastic brushed aluminum finish (1-2 line)		CBK-NPE28BA	
BLANK — Plastic brushed aluminum finish (1-3 line)		CBK-NPE29BA	
BLANK — Plastic (1-2 line) ^③		CBK-NPE28P	
BLANK — Plastic (1-3 line) ^③		CBK-NPE29P	
Custom engraving			
NOTE: For custom engraving instructions, please see "Ordering Instructions, page 1.33			6.50
Other			
EMERGENCY STOP (70mm)	Aluminum	CBK-NPE30	6.00
EMERGENCY STOP (70mm)	Plastic	CBK-NPE34	5.00

Nameplate holders — plastic

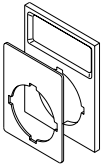
Color	Catalog number	List price
Black	CBK-KNPHB	\$.70

① Nameplate holders are required.
 ② Nameplate inserts have markings on both sides. EX: CBK-NP1 has "CLOSE" on the front side and "OPEN" on the back side.
 ③ The plastic blank is black on one side and white on the other.

22 mm

Components

Custom engraved inserts and nameplates



Nameplate inserts — aluminum^①

Type	Maximum letters per line	Catalog number	List price
<p>1 line</p>	11	CBK-NP19-01	\$ 5.90
<p>2 lines</p>	11	CBK-NP19-02	
<p>2 position selector switch</p>	5	CBK-NP19-03	
<p>3 position selector switch</p>	5	CBK-NP19-04	

General specifications

- All characters are 1/8" high, upper & lower case. Please specify if all capital letters are desired.
- The legend plate inserts and the fixed legend plates are silver-grey anodized aluminum.
- All special engravings involve engraving the desired lettering into the metal surface and then treating the engraved surfaces with black ink.

Ordering custom engraved nameplates

- Select the desired legend plate.
- Indicate the catalog number.
- Write the desired words to be engraved on each line.
EX: CBK-NPE28-02
Line 1: Pump No. 1
Line 2: Off



Fixed nameplates — aluminum or plastic^②

Type	Maximum letters per line	Finish ^②	Catalog number	List price
<p>Pushbuttons or pilot lights</p>	11 39mm	A B BA W	CBK-NPE28-01 CBK-NPE28B-01 CBK-NPE28BA-01 CBK-NPE28W-01	\$ 6.50
<p>2 Position selector switches</p>	11 (line 1) 5 (line 2) 5 (line 3) 44.5mm	A B BA W	CBK-NPE28-02 CBK-NPE28B-02 CBK-NPE28BA-02 CBK-NPE28W-02	
<p>3 Position selector switches</p>	5 39mm	A B BA W	CBK-NPE28-03 CBK-NPE28B-03 CBK-NPE28BA-03 CBK-NPE28W-03	
<p>2 Position toggle switches</p>	11 (line 1) 5 (line 2) 5 (line 3A) 5 (line 3B) 44.5mm	A B BA W	CBK-NPE29-02 CBK-NPE29B-02 CBK-NPE29BA-02 CBK-NPE29W-02	
<p>2 Position toggle switches</p>	4 39mm	A B BA W	CBK-NPE28-04 CBK-NPE28B-04 CBK-NPE28BA-04 CBK-NPE28W-04	
<p>2 Position toggle switches</p>	5 44.5mm	A B BA W	CBK-NPE29-04 CBK-NPE29B-04 CBK-NPE29BA-04 CBK-NPE29W-04	
<p>3 Position toggle switches</p>	39mm	A B BA W	CBK-NPE28-05 CBK-NPE28B-05 CBK-NPE28BA-05 CBK-NPE28W-05	
<p>3 Position toggle switches</p>	44.5mm	A B BA W	CBK-NPE29-05 CBK-NPE29B-05 CBK-NPE29BA-05 CBK-NPE29W-05	

22 mm

^① For drilling plans, see page 1.45.






^② Finish: A = brushed aluminum; B = black plastic face with white letters; BA = plastic with brushed aluminum finish; W = white plastic face with black letters.



Components

Buttons, lenses and illuminated mushroom heads

Buttons (for non-illuminated pushbuttons)

Item	Color	Catalog number	List price
Flush  CBK-KBY	Red Green Yellow Blue Black Clear White	CBK-KBR CBK-KBG CBK-KBY CBK-KBL CBK-KBB CBK-KBC CBK-KBW	\$ 1.50
Extended  CBK-KBEY	Red Green Yellow Blue Black Clear White	CBK-KBER CBK-KBEG CBK-KBEY CBK-KBEL CBK-KBEB CBK-KBEC CBK-KBEW	1.50
30mm mushroom  CBK-BM3R	Red Black Red w/Arrow Black w/Arrow	CBK-BM3R CBK-BM3B CBK-BM3RA CBK-BM3BA	2.00
40mm mushroom  CBK-BM40RO	Red Black Red w/Arrow Black w/Arrow Red w/Circle Black w/Circle Yellow	CBK-BM40R CBK-BM40B CBK-BM40RA CBK-BM40BA CBK-BM40RO CBK-BM40BO CBK-BM40Y	2.00
60mm mushroom  CBK-BM60Y	Red Black Yellow	CBK-BM60R CBK-BM60B CBK-BM60Y	6.00



Buttons (for illuminated pushbuttons)

Item	Color	Catalog number	List price
Flush  CBK-KBY	Red Green Yellow Blue Clear White	CBK-KBIR CBK-KBIG CBK-KBIY CBK-KBIL CBK-KBIC CBK-KBIW	\$ 1.50
Extended  CBK-KBEY	Red Green Yellow Blue Clear White	CBK-KBEIR CBK-KBEIG CBK-KBEIY CBK-KBEIL CBK-KBEIC CBK-KBEIW	1.50
40mm mushroom  CBK-BM4IY	Red Yellow Green	CBK-BM4IR CBK-BM4IY CBK-BM4IG	4.00
60mm mushroom  CBK-BM6IY	Red Yellow Green	CBK-BM6IR CBK-BM6IY CBK-BM6IG	8.00


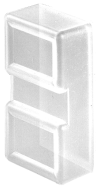

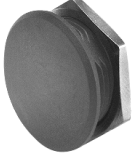
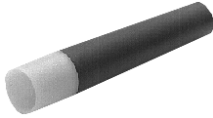


Pilot light lenses

Item	Color	Catalog number	List price
Standard  CBK-KLR	Red Green Yellow Blue Clear White	CBK-KLR CBK-KLG CBK-KLY CBK-KLL CBK-KLC CBK-KLW	\$ 2.50
Freznel lens  CBK-XFL	Clear	CBK-XFL	3.00

Mounting rings

Item	Color	Catalog number	List price
Pushbutton  CBK-CR	Chrome plastic Black plastic Chrome metal	CBK-CR CBK-KR CBK-CMR	\$ 1.25 1.00 2.50
Selector switch/toggle  CBK-KRS	Chrome plastic Black plastic Chrome metal	CBK-CRS CBK-KRS CBK-CMRS	1.25 1.00 2.50

Accessories


Item	Catalog number	List price
 <p>Flush and extended boots</p> <p>Transparent soft membrane permits easy visibility of button lens while protecting buttons and pilot lights from water and dust.</p>	CBK-KXB (Flush) CBK-KXBE (Extended)	\$ 8.00
 <p>Protective boot for two button operators</p>	CBK-XB2	8.00
 <p>Extended button guard</p> <p>Protects extended pushbuttons from being accidentally depressed.</p>	CBK-KXG	4.00
 <p>22mm hole plug</p> <p>Hole plugs are used to cover pushbuttons holes in panels</p>	CBK-XP	2.00
 <p>Lamp removal tool</p> <p>Removes all incandescent or LED lamps.</p>	CBK-XLTL	10.00
 <p>Flush pushbutton protective cover</p>	CBK-KXC	15.00
 <p>Mushroom guard [Ⓢ]</p>	CBK-XMG	16.00

[Ⓢ] For use with operators shown on pages 1.8 - 1.10.

Item	Catalog number	List price								
 <p>Padlock attachment for 30mm mushroom (twist release, only)</p> <p>Prevents unauthorized use of equipment. Provides space for up to 4 padlocks with the button in the depressed position. Holes fit standard 1/4" padlock.</p>	CBK-XPA	\$ 20.00								
<table border="1"> <thead> <tr> <th>Item</th> <th>Lock type</th> <th>Catalog number</th> <th>List price</th> </tr> </thead> <tbody> <tr> <td>  <p>Extra key</p> <p>To order, refer to the key number imprinted on the key. Then use the appropriate catalog number that ends in the same number.</p> </td> <td> 1 2 3 </td> <td> CBK-XK455 CBK-XK421 CBK-XK3433-E </td> <td>10.00</td> </tr> </tbody> </table>	Item	Lock type	Catalog number	List price	 <p>Extra key</p> <p>To order, refer to the key number imprinted on the key. Then use the appropriate catalog number that ends in the same number.</p>	1 2 3	CBK-XK455 CBK-XK421 CBK-XK3433-E	10.00		
Item	Lock type	Catalog number	List price							
 <p>Extra key</p> <p>To order, refer to the key number imprinted on the key. Then use the appropriate catalog number that ends in the same number.</p>	1 2 3	CBK-XK455 CBK-XK421 CBK-XK3433-E	10.00							
 <p>Spare gasket</p>	CBK-XRG	1.00								
 <p>Mounting tool</p>	CBK-KXMT	10.00								
 <p>Square bezel</p>	CBK-BZL	2.00								
 <p>Lockable selector switch</p>	CBK-XSWL	35.00								
 <p>Selector switch guard</p>	CBK-XSWG	8.00								

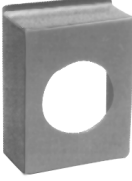
22 mm

Accessories

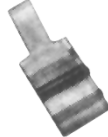
Item	Catalog number	List price
	CBK-XGS	\$.50

Grounding screw

Provides a means of attaching a grounding wire.

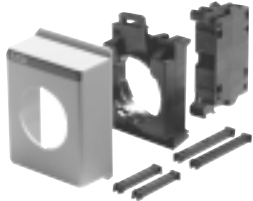
Item	Catalog number	List price
	CBK-XFC	\$ 5.00

Front cap

	CBK-XSA	.20
--	---------	-----

Snap connector

Connects contact blocks to holder. Two required per holder. Twenty per package.

	CBK-XDIN	8.20
---	----------	------

DIN rail mounting kit

The DIN rail mounting kit includes:

Quantity	Item	Catalog number
1	Front cap	CBK-XFC
4	Snap attachment	CBK-XSA
1	Dummy block	CBK-XBB
1	Pin set, 2 unit	CBK-XP2
1	Pin set, 3 unit	CBK-XP3
1	Holder	CBK-CH



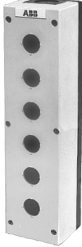
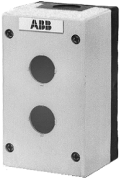

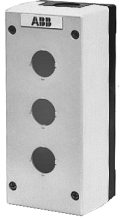

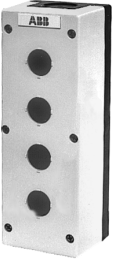

DIN rail mounting accessories



CBK-XDIN

22 mm

Plastic enclosures

Item	Catalog number	List price	Item	Catalog number	List price
  1 element	CBK-EPY ^① (Yellow enclosure for emergency stop applications) CBK-EP1	\$ 28.00 28.00	 6 element	CBK-EP6	\$ 52.00
 2 element	CBK-EP2	32.00	 Impact protector	CBK-CS	2.00
 3 element	CBK-EP3	36.00	 Spacer ^②	CBK-XW	1.00
 4 element	CBK-EP4	44.00	 Emergency stop adaptor plate ^③	CBK-ESAP	6.00

22 mm

Note: All enclosures are UL Listed & CSA Approved for Types 1, 3R, 4, 4X, & 12 applications.

Metallic enclosures

Metallic Type 1, 3, 3R, 4, 4X, 12 & 13 enclosures are also available upon request. Please contact ABB Control Inc.

① Not available in metal.

② All pilot devices mounted in enclosures must have legend plate or spacer to correctly interface with auxiliary contacts.

③ Must be used with CBK-ES★ Emergency Stop operators shown on pages 1.11 - 1.13.

Plastic enclosures ^{①②}

Assembly examples



CBK-EP2SS

Custom assembly of 2-hole pushbutton station

Example: Start-stop

CBK-EP2	+	CBK-KPGC5	+	CBK-CB10	=	CBK-EP2SS
\$ 32.00		\$ 9.00		\$ 8.00		\$ 66.00
		CBK-KPERC4		CBK-CB01		
		\$ 9.00		\$ 8.00		

Custom assembly of 3-hole pushbutton station

Example: Forward - Reverse - Stop

CBK-EP3	+	CBK-KPGC7	+	(2) CBK-CB10	=	CBK-EP3FRS
\$ 36.00		\$ 9.00		\$ 16.00		\$ 87.00
		CBK-KPGC6		(1) CBK-CB01		
		\$ 9.00		\$ 8.00		
		CBK-KPERC4				
		\$ 9.00				



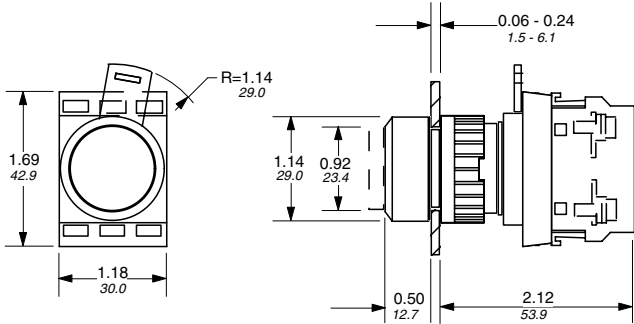
CBK-EP3FRS

① Fixed legend plates may be used with enclosures. Enclosure must be mounted horizontally when using 1.75" nameplates or insert holders.
 ② Consult factory for specific applications and part numbers.

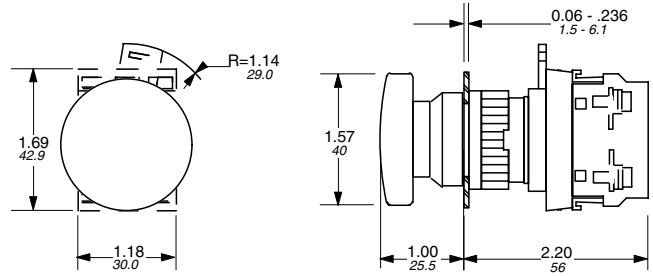
Approximate dimensions

00.00 Inches
00.00 Millimeters

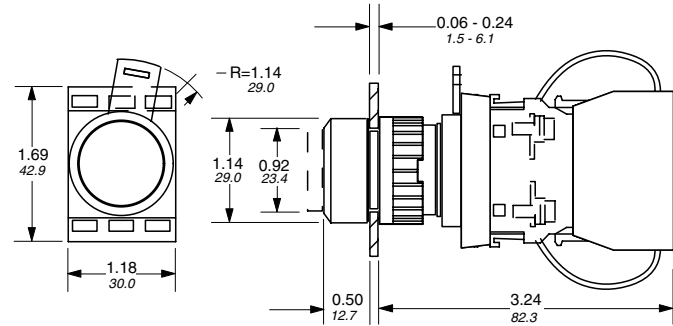
Pushbutton and illuminated pushbutton



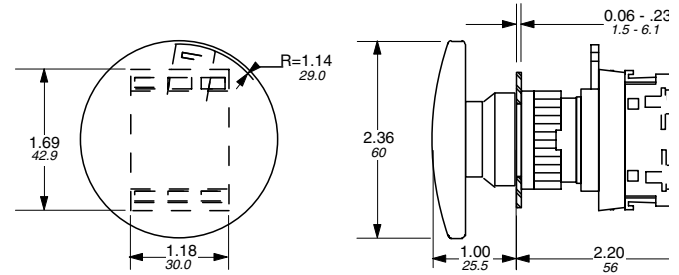
Mushroom pushbutton — 40mm (Momentary)



Illuminated pushbutton with transformer

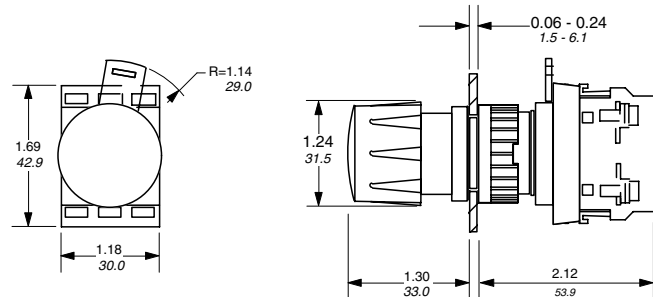


Mushroom pushbutton — 60mm

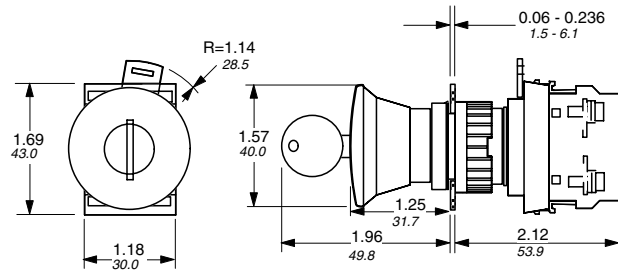


22 mm

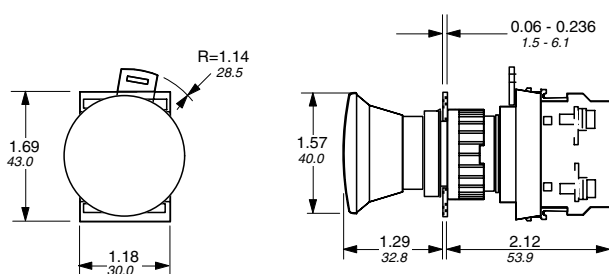
Mushroom pushbutton — 30mm



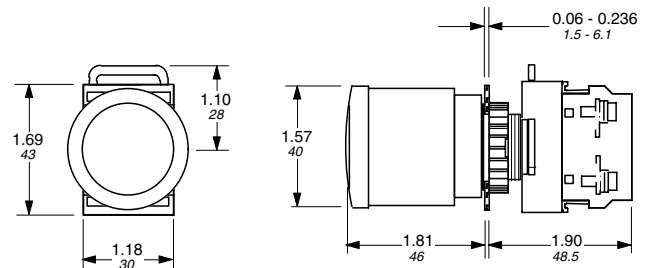
Mushroom pushbutton — 40mm lockable



Mushroom pushbutton — 40mm (Push-pull & twist release)



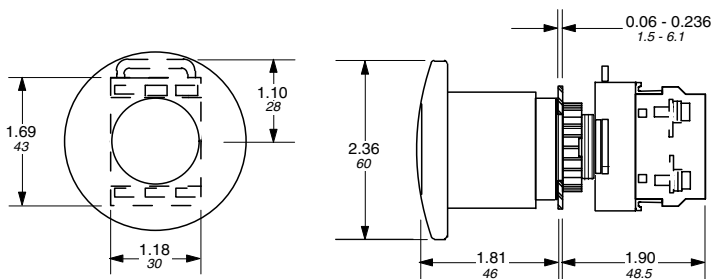
Emergency stop pushbutton — 40mm



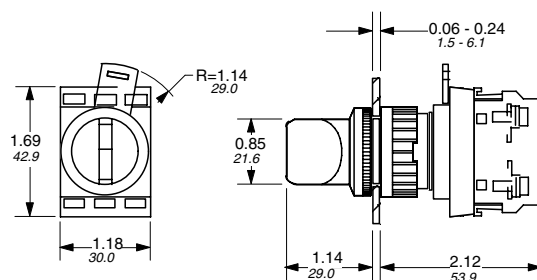
← 00.00 → Inches
00.00 → Millimeters

Approximate dimensions

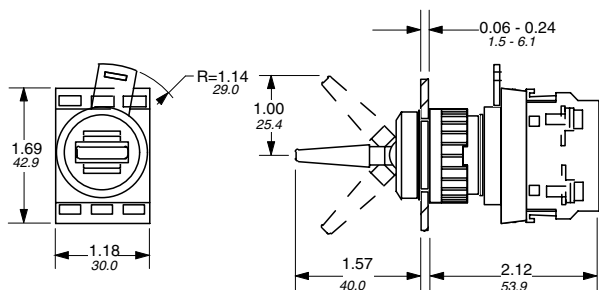
Emergency stop pushbutton — 60mm



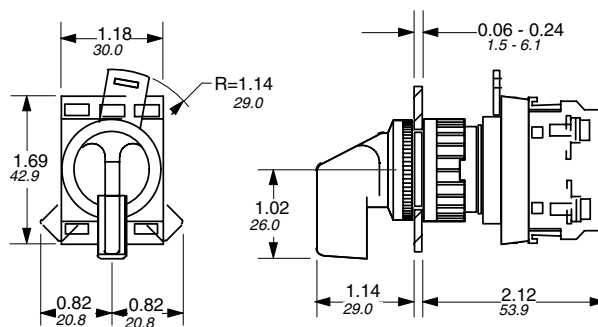
Selector switch — knob handle



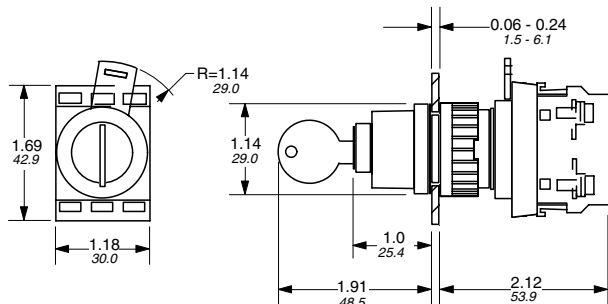
Toggle switch



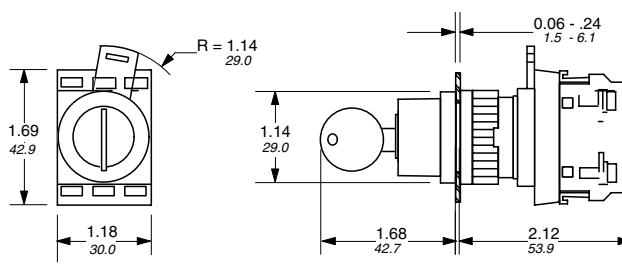
Selector switch — lever handle



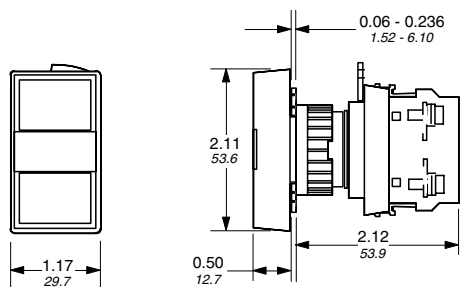
Key operated pushbutton



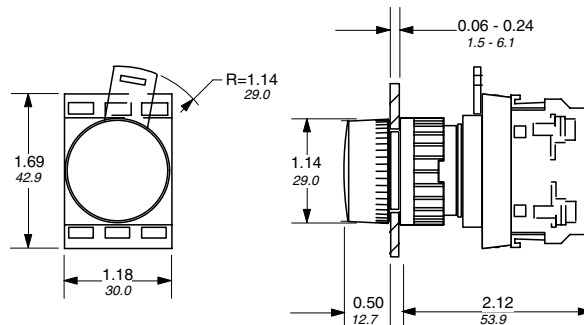
Selector switch — key operated



Two button pushbutton



Pilot light

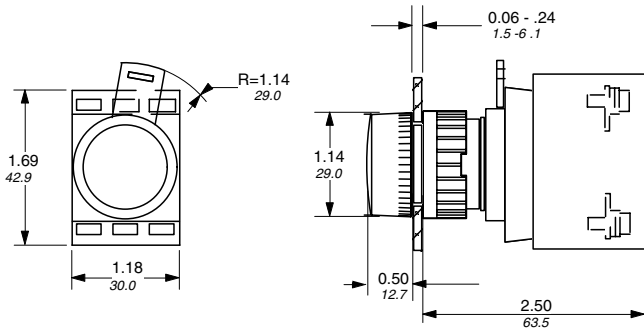


22 mm

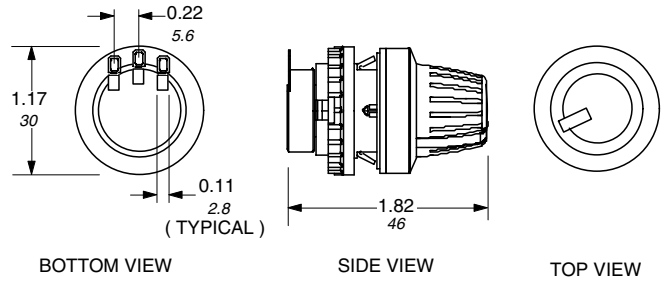
Approximate dimensions

← 00.00 → Inches
00.00 → Millimeters

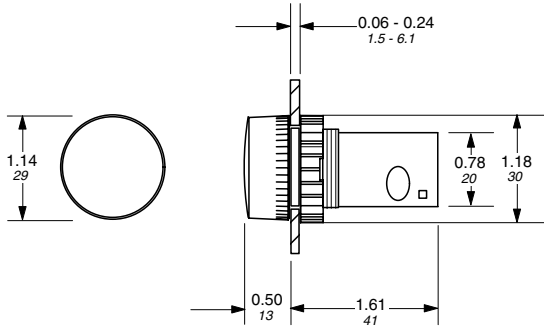
Pilot light with transformer



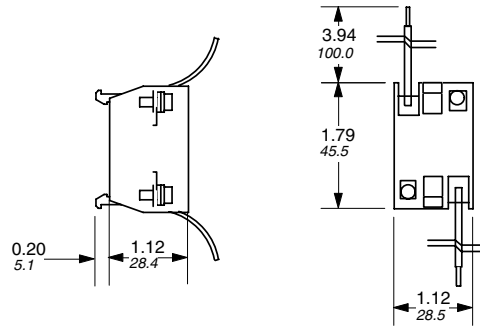
Potentiometer



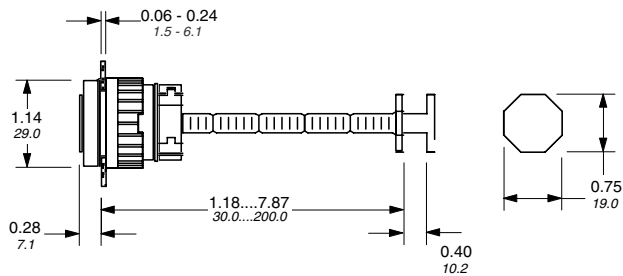
Compact pilot light



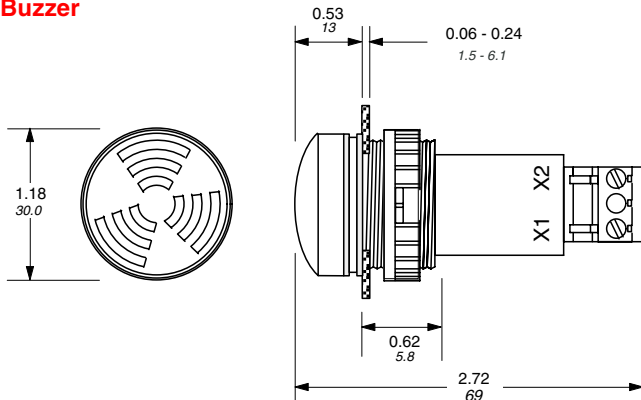
Transformer block



Reset actuator

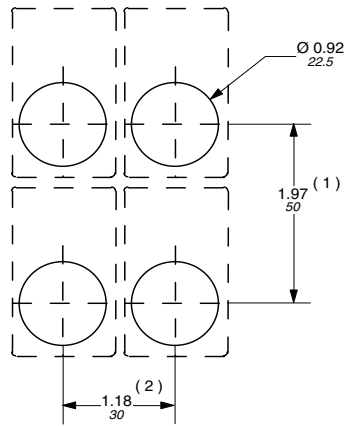


Buzzer

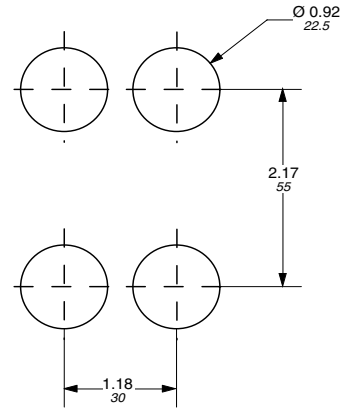
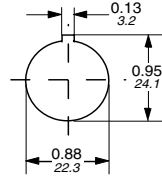


Approximate dimensions

Nameplate drilling plans



Pushbuttons, switches & pilot lights



Double pushbuttons

(1) 2.16 /55mm when legend plate H= 1.75 /44.4mm is used,
2.40 /61mm for mushroom pushbutton with D =60mm.

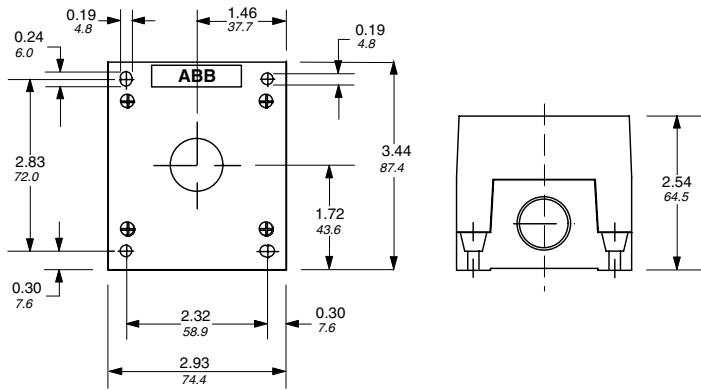
(2) 1.46 /37mm when legend plate with insert is used,
1.97 /50mm when 5-block holder is used.
Min. dimension = the diameter of mushroom
button

22 mm

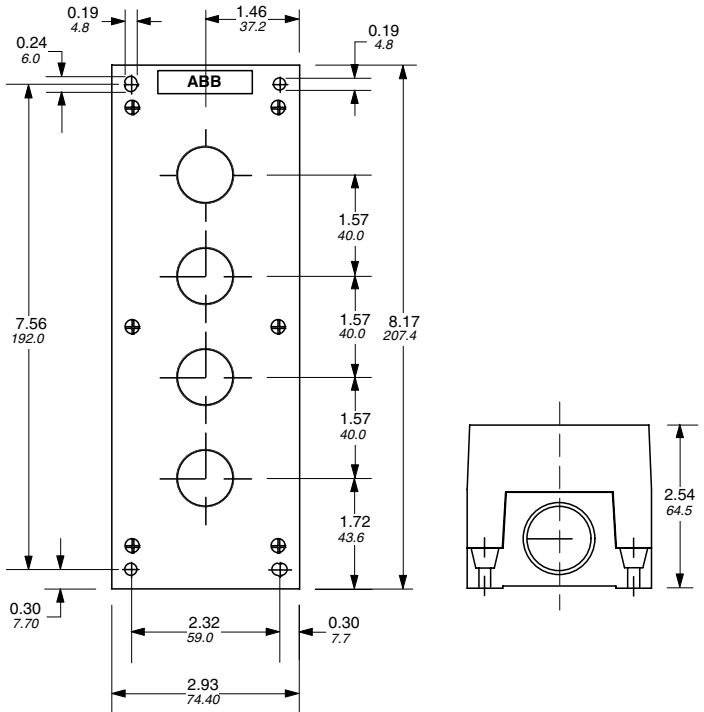
Approximate dimensions Enclosures

← 00.00 Inches
00.00 Millimeters →

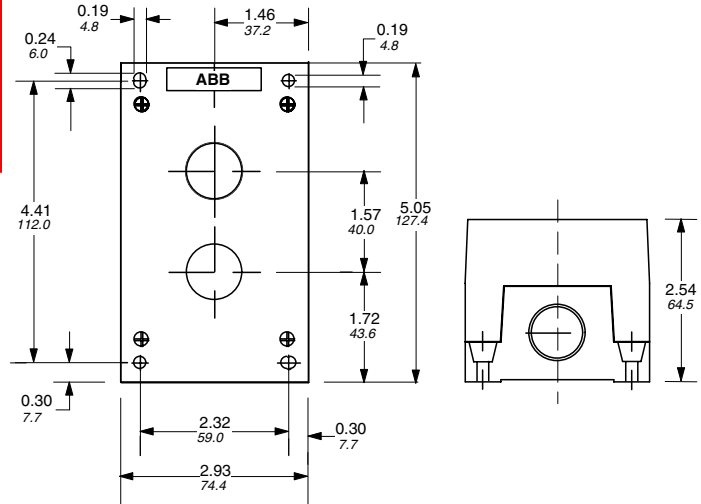
1 element



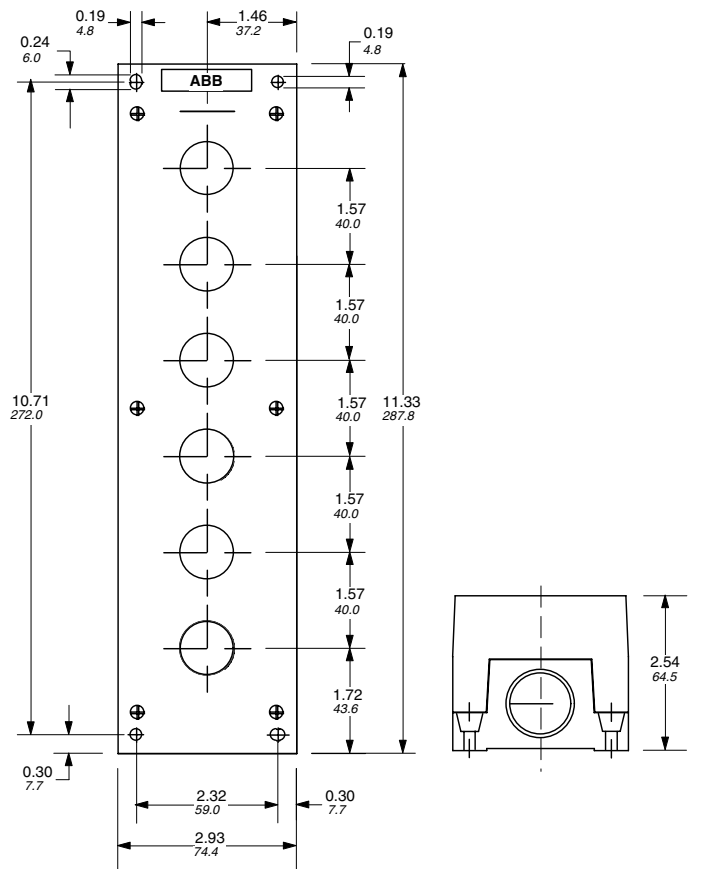
4 element



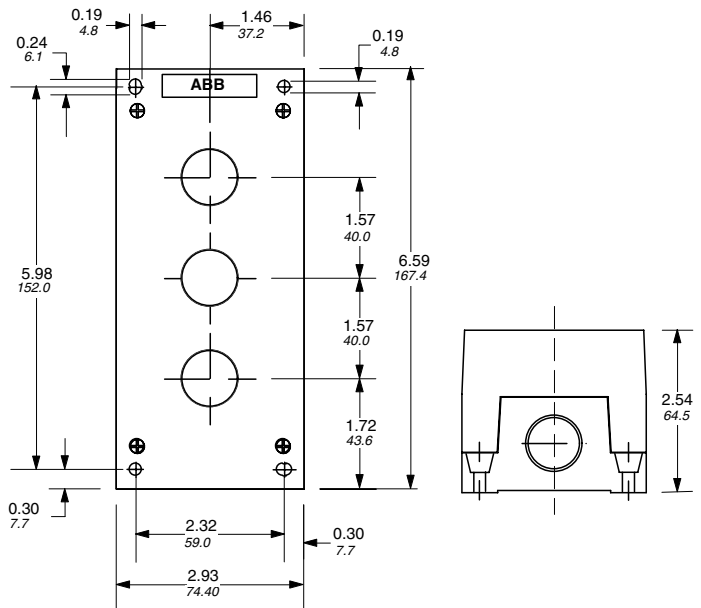
2 element



6 element



3 element



① One, two & three element pushbutton stations have knockouts for 1/2" conduit. Four & six element pushbutton stations have knockouts for 3/4" conduit.

22 mm